

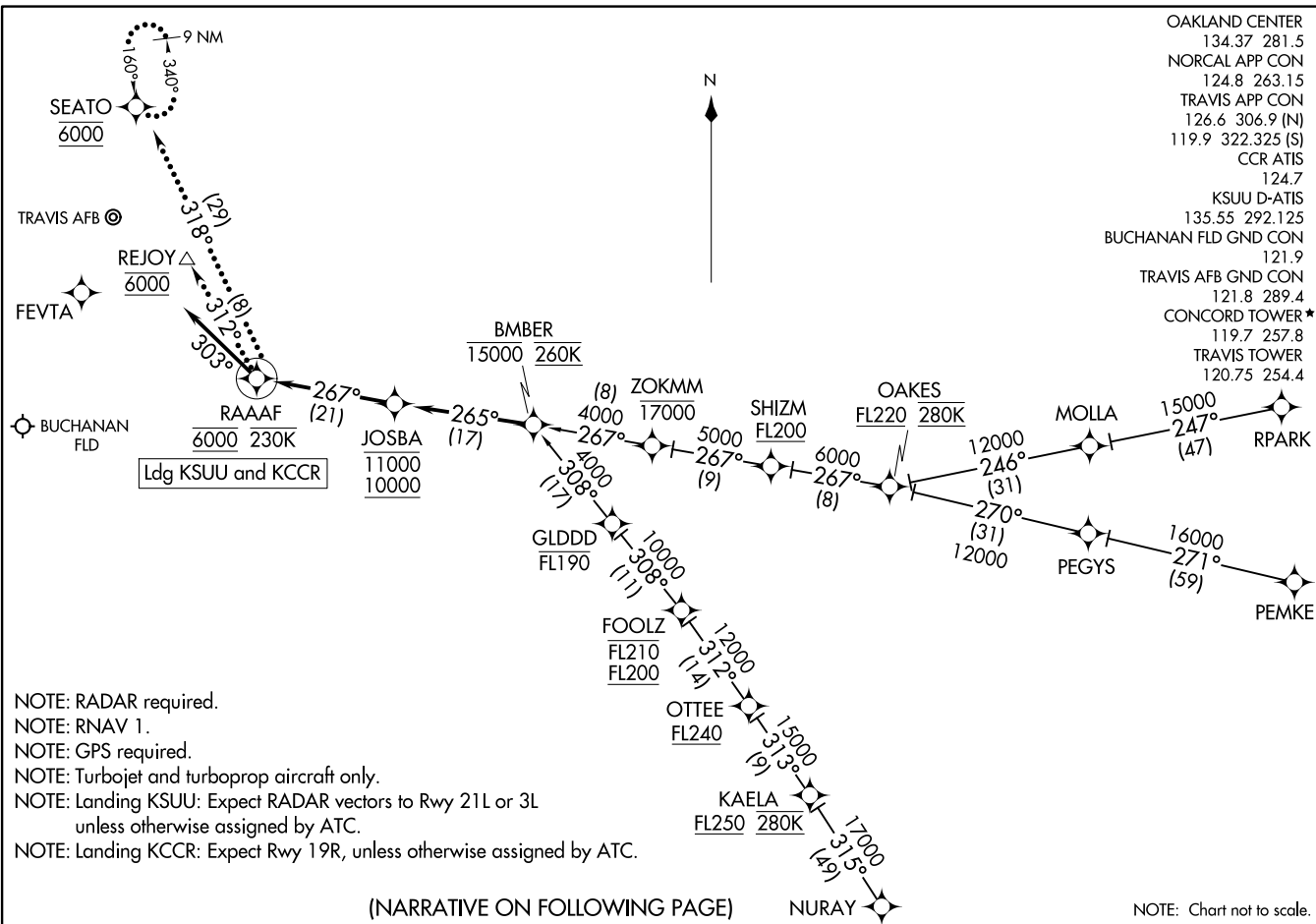
BMBER ONE ARRIVAL (RNAV)
(BMBER.BMBER1) 05DEC19

(BMBER.BMBER1) 21112
BMBER ONE ARRIVAL (RNAV)

AI-5320 (FAA)

CONCORD, CALIFORNIA

- OAKLAND CENTER 134.37 281.5
- NORCAL APP CON 124.8 263.15
- TRAVIS APP CON 126.6 306.9 (N)
- 119.9 322.325 (S)
- CCR ATIS 124.7
- KSUU D-ATIS 135.55 292.125
- BUCHANAN FLD GND CON 121.9
- TRAVIS AFB GND CON 121.8 289.4
- CONCORD TOWER* 119.7 257.8
- TRAVIS TOWER 120.75 254.4



- NOTE: RADAR required.
- NOTE: RNAV 1.
- NOTE: GPS required.
- NOTE: Turbojet and turboprop aircraft only.
- NOTE: Landing KSUU: Expect RADAR vectors to Rwy 21L or 3L unless otherwise assigned by ATC.
- NOTE: Landing KCCR: Expect Rwy 19R, unless otherwise assigned by ATC.

(NARRATIVE ON FOLLOWING PAGE)

NURAY

NOTE: Chart not to scale.

CONCORD, CALIFORNIA

ARRIVAL ROUTE DESCRIPTION

NURAY TRANSITION (NURAY.BMBER1)

PEMKE TRANSITION (PEMKE.BMBER1)

RPARK TRANSITION (RPARK.BMBER1)

LANDING KSUU, KCCR: From BMBER on track 265° to cross JOSBA between 10000 and 11000, then on track 267° to cross RAAAF at 6000 and at or below 230K, then on heading 303° or as assigned by ATC. Expect RADAR vectors to final approach course.

LOST COMMUNICATIONS

KSUU: From RAAAF, proceed on track 318° to cross SEATO at 6000. Execute ILS or LOC RWY 21L or TACAN RWY 3L approach. If unable, hold at SEATO as depicted, maintain 6000 feet.

KCCR: From RAAAF, proceed on track 312° to cross REJOY at 6000 and execute RNAV, LDA, or VOR RWY 19R approach.

SW-2, 16 APR 2026 to 14 MAY 2026

SW-2, 16 APR 2026 to 14 MAY 2026