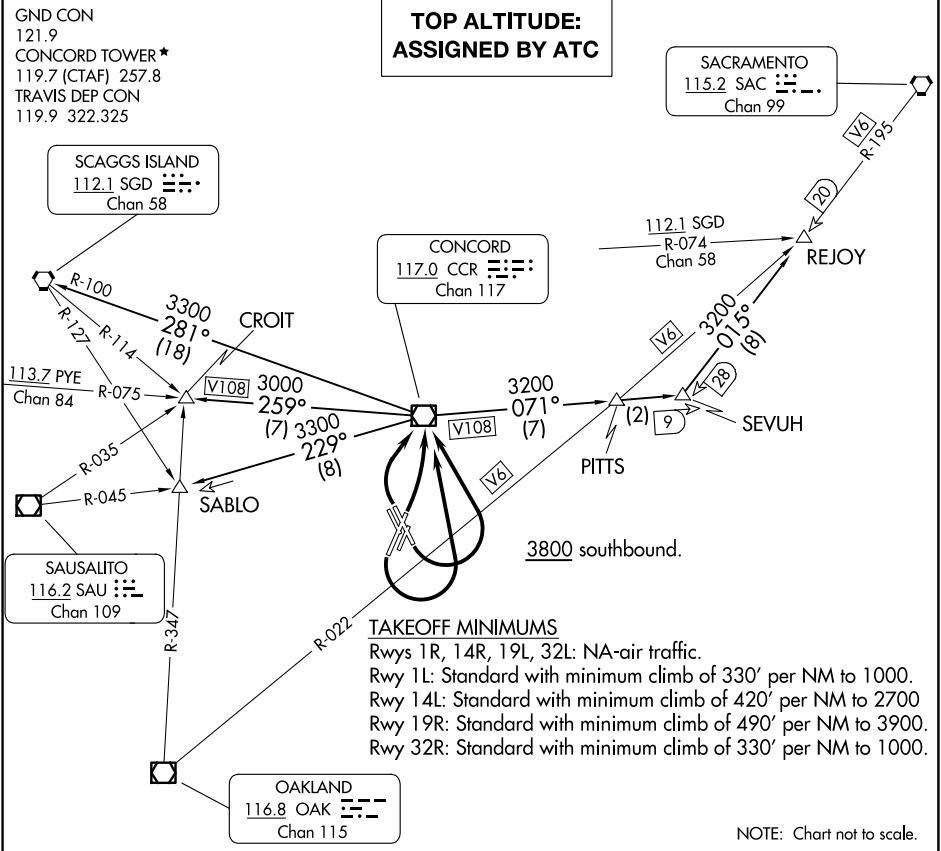


# BUCHANAN TWO DEPARTURE

AL-5320 (FAA)

BUCHANAN FLD (CCR)  
CONCORD, CALIFORNIA

**TOP ALTITUDE:  
ASSIGNED BY ATC**



SW-2, 16 APR 2026 to 14 MAY 2026

SW-2, 16 APR 2026 to 14 MAY 2026

## DEPARTURE ROUTE DESCRIPTION

TAKEOFF RUNWAYS 1L, 14L, 19R: Climbing left turn direct CCR VOR/DME, thence. . . .

TAKEOFF RUNWAY 32R: Climbing right turn direct CCR VOR/DME, thence. . . .

. . . . on (transition) or (assigned route).

- CROIT TRANSITION (BCHN2.CROIT): From over CCR VOR/DME on CCR R-259 to CROIT INT.
- PITTS TRANSITION (BCHN2.PITTS): From over CCR VOR/DME on CCR R-071 to PITTS INT.
- REJOY TRANSITION (BCHN2.REJOY): From over CCR VOR/DME on CCR R-071 and SAC R-195 to REJOY INT.
- SABLO TRANSITION (BCHN2.SABLO): From over CCR VOR/DME on CCR R-229 to SABLO INT.
- SCAGGS ISLAND TRANSITION (BCHN2.SGD): From over CCR VOR/DME on CCR R-281 and SGD R-100 to SGD VORTAC.

# BUCHANAN TWO DEPARTURE