

# COPTER RNAV (GPS) Y RWY 14

MANSFIELD MUNI (1B9)

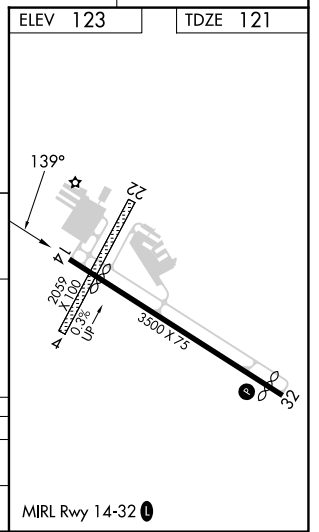
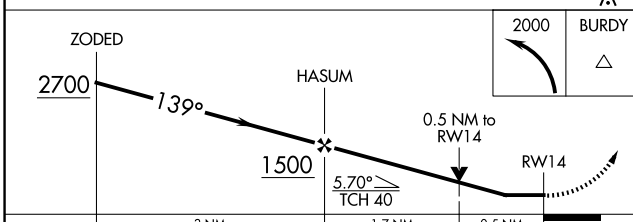
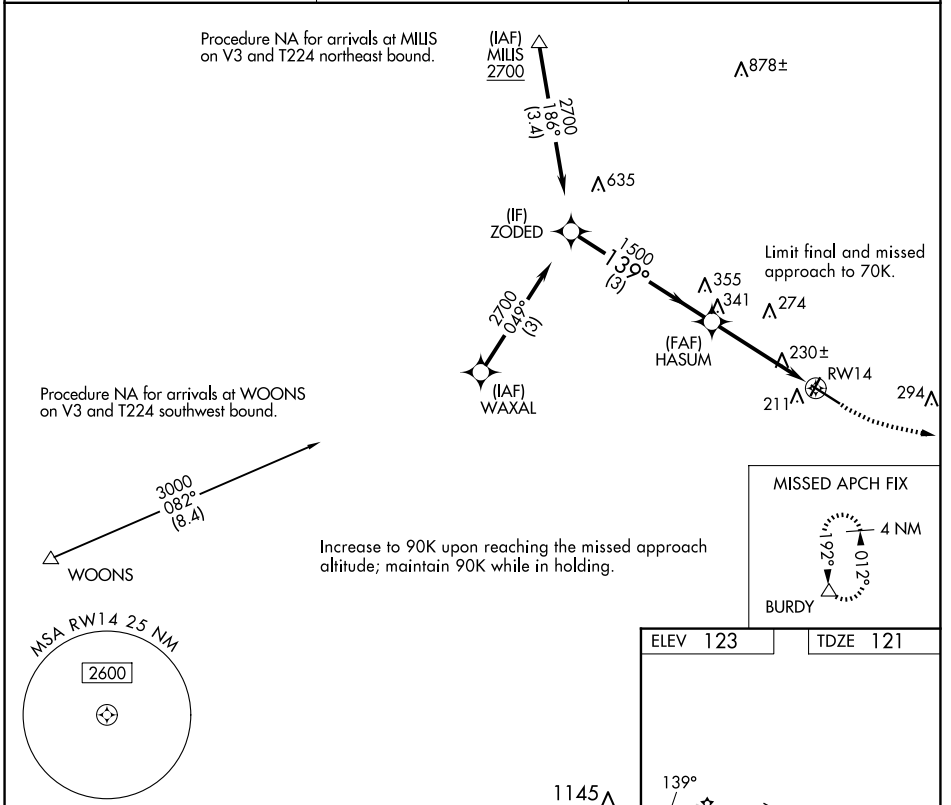
WAAS CH <b>50444</b> <b>W14B</b>	APP CRS <b>139°</b>	Rwy Ldg <b>2991</b>
	TDZE <b>121</b>	
	Apt Elev <b>123</b>	

RNP APCH - GPS.

**⚠** VDP NA when using OWD altimeter setting. Rwy 14 helicopter visibility reduction below 3/4 SM NA. Procedure NA at night. When local altimeter setting not received, use OWD altimeter setting and increase all MDAs 40 feet.

**MISSED APPROACH:** Climbing left turn to 2000 direct BURDY and hold.

AWOS-3PT <b>118.675</b>	BOSTON APP CON <b>124.1</b>	UNICOM <b>123.0 (CTAF)</b>
----------------------------	--------------------------------	-------------------------------



CATEGORY	COPTER	
LP MDA	480-1	359 (400-1)
LNAV MDA	540-1	419 (500-1)

NE-1, 16 APR 2026 to 14 MAY 2026

NE-1, 16 APR 2026 to 14 MAY 2026