

WAAS CH 90444 W14A	APP CRS 139°	Rwy Ldg TDZE 121 Apt Elev 123	2991
--	------------------------	--	-------------

RNAV (GPS) Z RWY 14

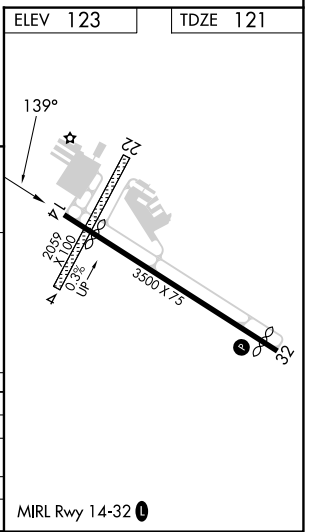
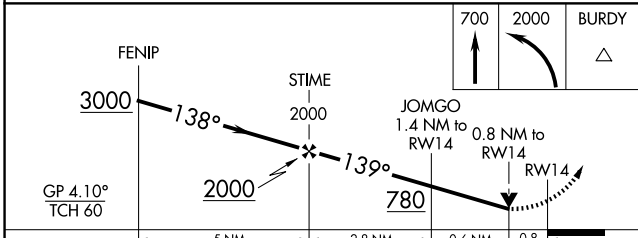
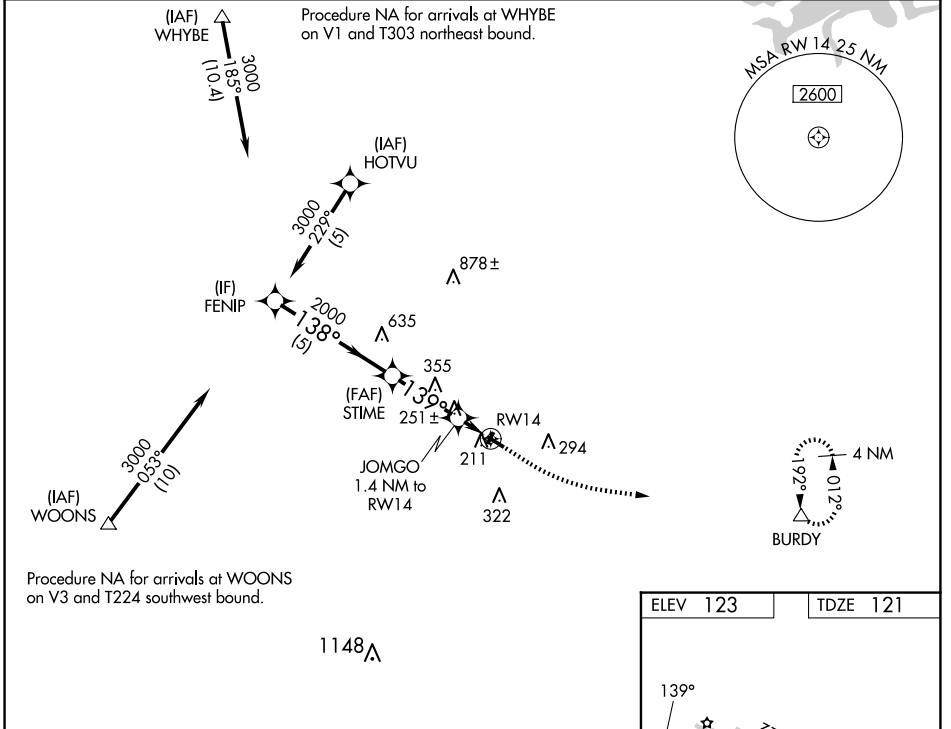
MANSFIELD MUNI (1B9)

RNP APCH - GPS.

⚠ Circling NA to Rwys 4 and 22. Rwy 14 helicopter visibility reduction below $\frac{3}{4}$ SM NA.
⚠ For uncompensated Baro-VNAV systems, LNAV/VNAV NA below -1.5°C or above 54°C .
 Baro-VNAV and VDP NA when using OWD altimeter setting. Procedure NA at night.
 When local altimeter setting not received, use OWD altimeter setting: increase LPV DA to 553 feet and all visibilities $\frac{1}{8}$ SM, increase LNAV/VNAV DA to 566 feet and all visibilities $\frac{1}{4}$ SM, and increase all MDAs 40 feet.

MISSED APPROACH:
 Climb to 700 then climbing left turn to 2000 direct BURDY and hold.

AWOS-3PT 118.675	BOSTON APP CON 124.1	UNICOM 123.0 (CTAF) 0
----------------------------	--------------------------------	---------------------------------



CATEGORY	A	B	C	D
LPV DA	486-1	365 (400-1)		NA
LNAV/VNAV DA	529-1 $\frac{1}{8}$	408 (500-1 $\frac{1}{8}$)		NA
LNAV MDA	520-1	399 (400-1)		NA
C CIRCLING	600-1	477 (500-1)		NA

NE-1, 16 APR 2026 to 14 MAY 2026

NE-1, 16 APR 2026 to 14 MAY 2026