

WAAS CH <b>40235</b> <b>W28A</b>	APP CRS <b>276°</b>	Rwy Ldg TDZE Apt Elev	<b>3181</b> <b>308</b> <b>308</b>
--	------------------------	-----------------------------	---

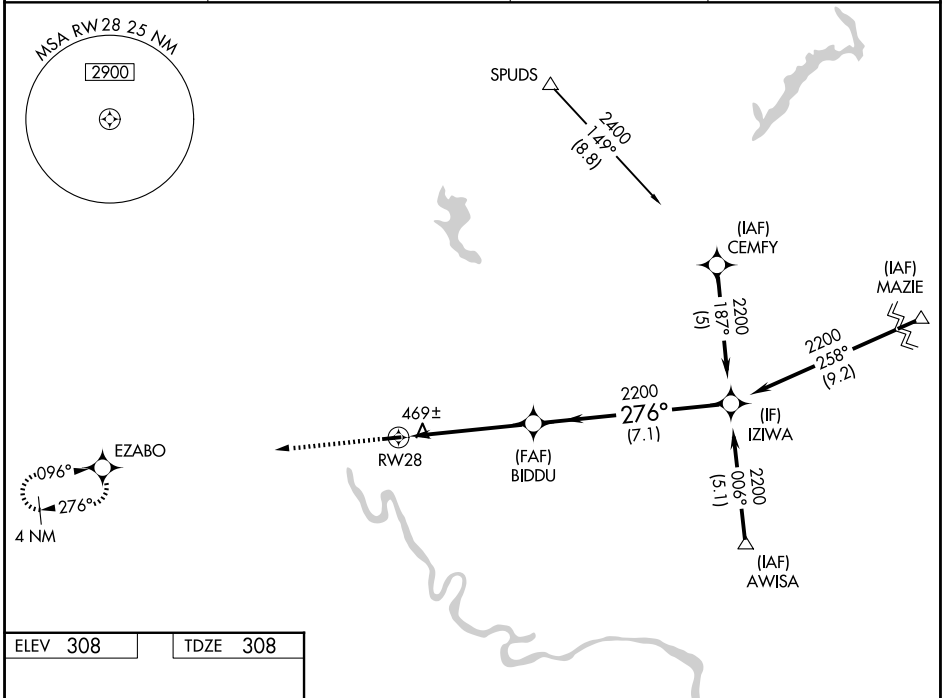
# RNAV (GPS) RWY 28

HERITAGE FLD (PTW)

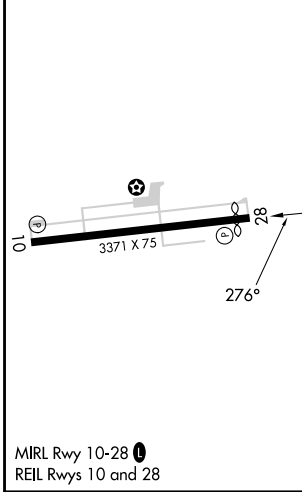
**⚠** Circling NA south of Rwy 10-28. DME/DME RNP-0.3 NA. VDP and Baro-VNAV NA when using Wings Fld altimeter setting. When local altimeter setting not received, use Wings Fld altimeter setting and increase all DA 35 feet and all MDA 40 feet, increase LPV all Cats visibilities 1/8 mile. Helicopter visibility reduction below 3/4 SM NA. For uncompensated Baro-VNAV systems, LNAV/VNAV NA below -15°C (5°F) or above 54°C (130°F).

**MISSED APPROACH:**  
Climb to 2600 direct EZABO and hold.

ASOS <b>119.425</b>	PHILADELPHIA APP CON <b>126.85 263.125</b>	CLNC DEL <b>118.55</b>	UNICOM <b>122.7 (CTAF) 0</b>
------------------------	---	---------------------------	---------------------------------



ELEV 308	TDZE 308
----------	----------



2600	EZABO	VGSI and RNAV glidepath not coincident (VGSI Angle 3.00/TCH 45).		
*LNAV only				
*1.4 NM to RWY 28				
BIDDU 2200				
IZIWA 2200				
GP 3.55° TCH 60				
1.4 NM    3.5 NM    7.1 NM				
CATEGORY	A	B	C	D
LPV DA	652-1	344 (400-1)		NA
LNAV/VNAV DA	779-1 3/8	471 (500-1 3/8)		NA
LNAV MDA	820-1	512 (600-1)		NA
CIRCLING	940-1	632 (700-1)		NA

NE-4, 16 APR 2026 to 14 MAY 2026

NE-4, 16 APR 2026 to 14 MAY 2026