

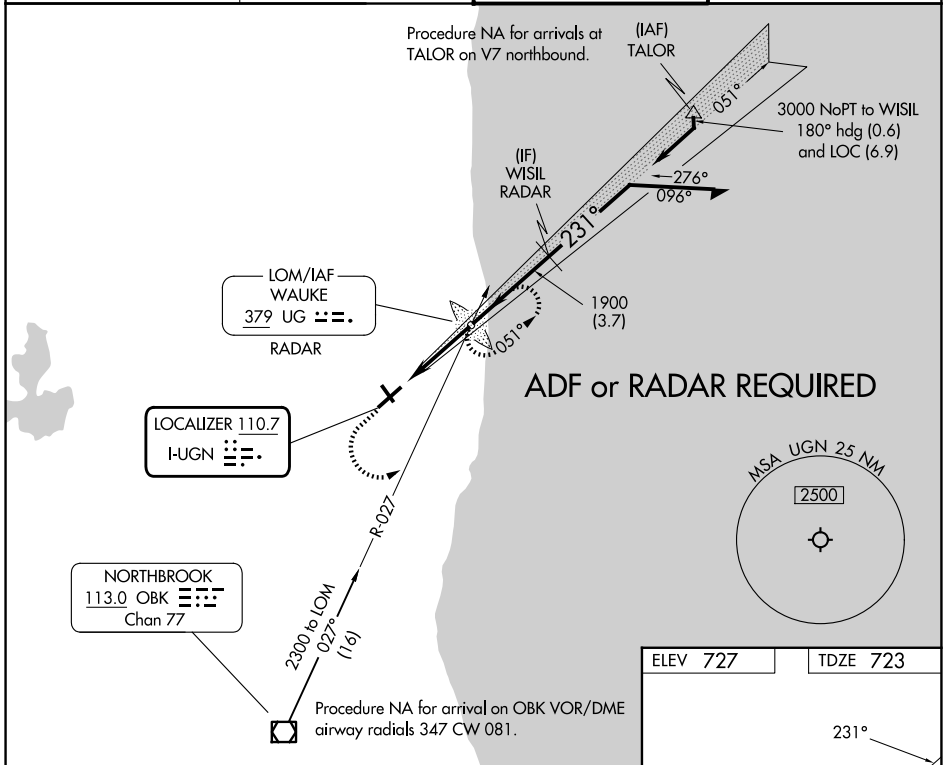
LOC I-UGN 110.7	APP CRS 231°	Rwy Ldg TDZE Apt Elev 6001 723 727
---------------------------	------------------------	--

ILS or LOC RWY 23

WAUKEGAN NTL (UGN)

<p>Circling to Rwy 14, 32 NA at night. ADF or RADAR required.</p>	<p>MALS</p>	<p>MISSED APPROACH: Climb to 1600 then climbing left turn to 2300 to intercept OBK VOR/DME R-027 to WAUKE LOM/RADAR and hold.</p>
---	-------------	---

ATIS 132.4	CHICAGO APP CON 120.55	WAUKEGAN TOWER ★ 120.05 (CTAF) 273.55	GND CON 121.65
----------------------	----------------------------------	--	--------------------------



1600	2300	OBK R-027	UG	WAUKE LOM/RADAR	Remain within 10 NM
				1868	051°
VGSI and ILS glidepath not coincident (VGSI Angle 3.00/TCH 52).				231°	2300
				1900	GS 3.00° TCH 53
3.4 NM					
CATEGORY	A	B	C	D	
S-ILS 23		923-1/2	200 (200-1/2)		
S-LOC 23		1040-1/2	317 (400-1/2)		
CIRCLING	1220-1	493 (500-1)	1220-1 1/2	1400-2 1/4	
			493 (500-1 1/2)	673 (700-2 1/4)	

ELEV 727	TDZE 723
----------	----------

231°

051°

2300

1900

GS 3.00° TCH 53

6001 X 150

0.45 52

TWR

REIL Rwy 5

HIRL Rwy 5-23

MIRL Rwy 14-32

FAF to MAP 3.4 NM

Knots	60	90	120	150	180
Min:Sec	3:24	2:16	1:42	1:21	1:08

EC-3, 16 APR 2026 to 14 MAY 2026

EC-3, 16 APR 2026 to 14 MAY 2026