

WAAS CH 70302 W16A	APP CRS 161°	Rwy Ldg TDZE Apt Elev	6200 192 192
--	------------------------	-----------------------------	---

RNAV (GPS) RWY 16L

MANASSAS RGNL/HARRY P DAVIS FLD (HEF)

RNP APCH - GPS.

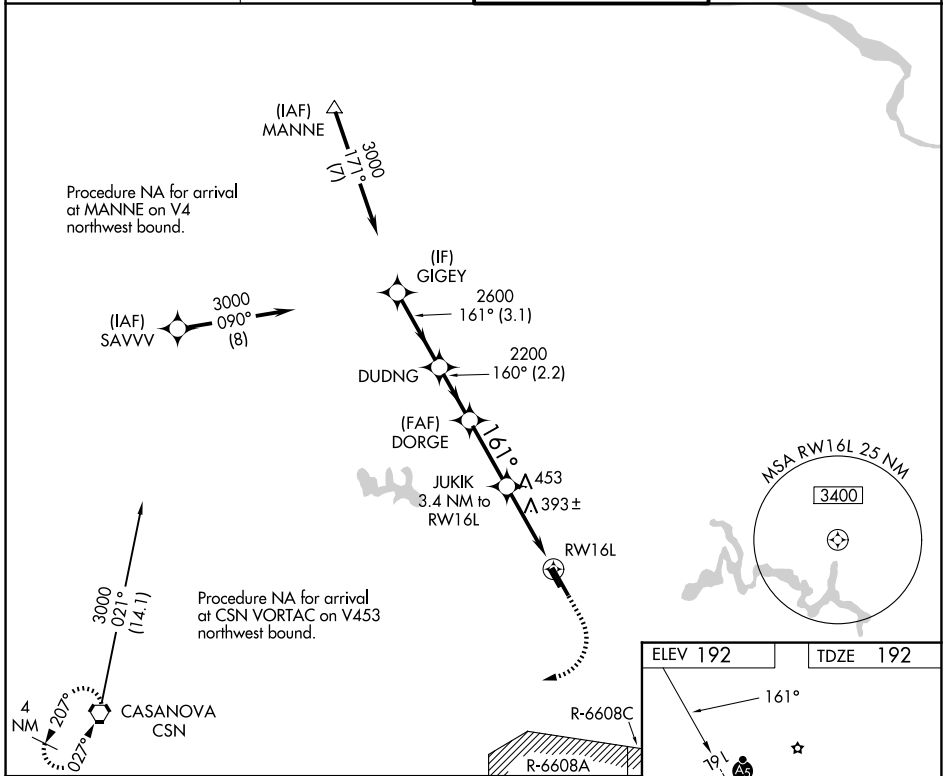
MALSR

MISSED APPROACH: Climb to 700 then climbing right turn to 3000 direct CSN VORTAC and hold.

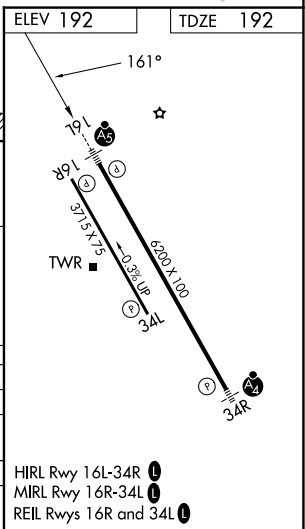
▼ For uncompensated Baro-VNAV systems, LNAV/VNAV NA below -15°C or above 54°C. For inop ALS, increase LNAV Cat C/D visibility to 1½ SM.



ATIS 125.175	POTOMAC APP CON 128.525 306.925	MANASSAS TOWER * 133.1 (CTAF) 360.75	GND CON 121.8
------------------------	---	--	-------------------------



	GIGEY	DUDNG	DORGE	JUKIK	CSN
	3000	2600	2200	1320	700
	161°	160°	161°		
GP 3.00° TCH 58					
	3.1 NM	2.2 NM	2.7 NM	2.1 NM	1.3 NM
CATEGORY	A	B	C	D	
LPV DA		442-½	250 (300-½)		
LNAV/VNAV DA		635-7/8	443 (500-7/8)		
LNAV MDA	660-½	468 (500-½)	660-1	468 (500-1)	
CIRCLING	720-1 528 (600-1)	740-1 548 (600-1)	840-1¾ 648 (700-1¾)	880-2¼ 688 (700-2¼)	



HIRL Rwy 16L-34R
MIRL Rwy 16R-34L
REIL Rwy 16R and 34L

NE-3, 16 APR 2026 to 14 MAY 2026

NE-3, 16 APR 2026 to 14 MAY 2026