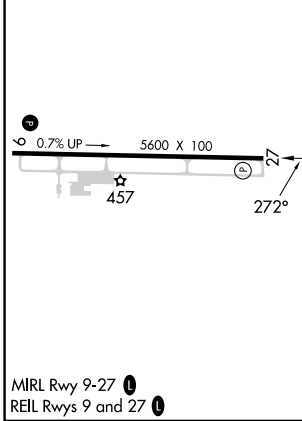
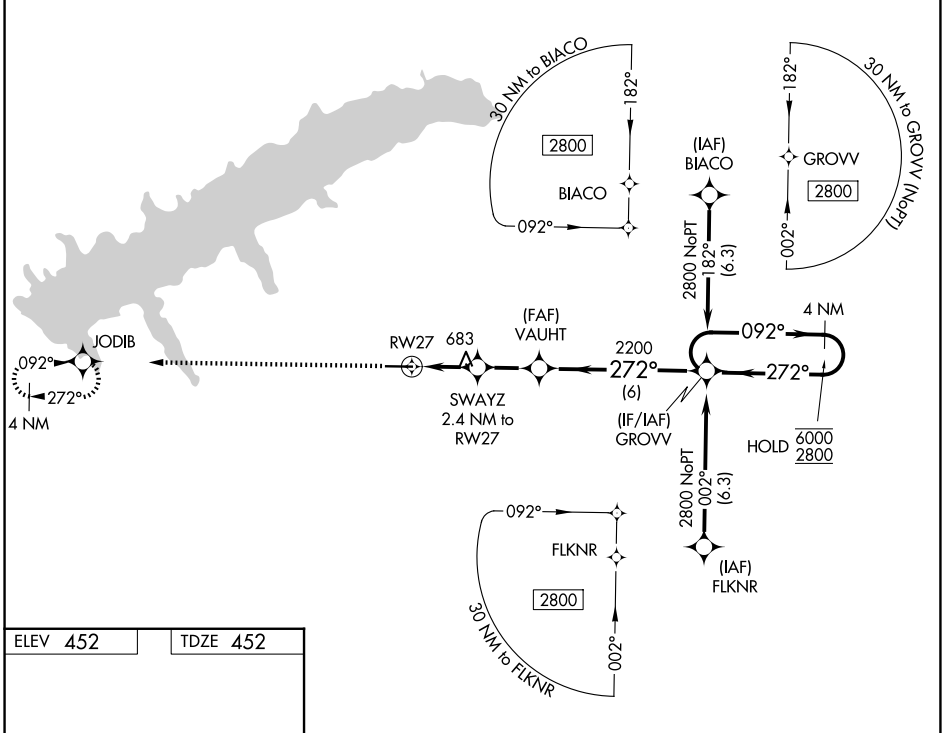


WAAS CH 63235 W27A	APP CRS 272°	Rwy Ldg TDZE Apt Elev	5600 452 452
--	------------------------	-----------------------------	---

RNAV (GPS) RWY 27

UNIVERSITY-OXFORD (UOX)

RNP APCH - GPS.		MISSED APPROACH: Climb to 2800 direct JODIB and hold.	
Rwy 27 helicopter visibility reduction below 3/4 SM NA.		AWOS-3PT 132.725	MEMPHIS CENTER 128.5 279.55
		GCO 135.075	UNICOM 123.0 (CTAF) 0



	2800	JODIB							
			SWAYZ 2.4 NM to RWY 27	VAUHT		GROV		4 NM Holding Pattern	
			1.1 NM to RWY 27	≤ 3.50° TCH 53	2200		092° → 6000		← 272° 2800
			1.1	1.3 NM	→ 2.2 NM	← 6 NM			
CATEGORY		A	B	C	D				
LP MDA		940-1	488 (500-1)	940-1 ³ / ₈	488 (500-1 ³ / ₈)				
LNAV MDA		940-1	488 (500-1)	940-1 ³ / ₈	488 (500-1 ³ / ₈)				
CIRCLING		980-1 528 (600-1)	1060-1 608 (700-1)	1380-2 ¹ / ₂ 928 (1000-2 ¹ / ₂)	1380-2 ³ / ₄ 928 (1000-2 ³ / ₄)				

OXFORD, MISSISSIPPI
MIRL Rwy 9-27
REIL Rwy 9 and 27

34°23'N-89°32'W

UNIVERSITY-OXFORD (UOX)

RNAV (GPS) RWY 27

SC-4, 16 APR 2026 to 14 MAY 2026

SC-4, 16 APR 2026 to 14 MAY 2026