

WAAS CH <b>99724</b> <b>W06A</b>	APP CRS <b>059°</b>	Rwy Idg TDZE Apt Elev	<b>2598</b> <b>670</b> <b>670</b>
--	------------------------	-----------------------------	---

# RNAV (GPS) RWY 6

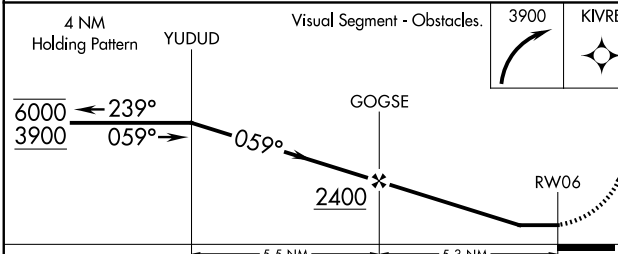
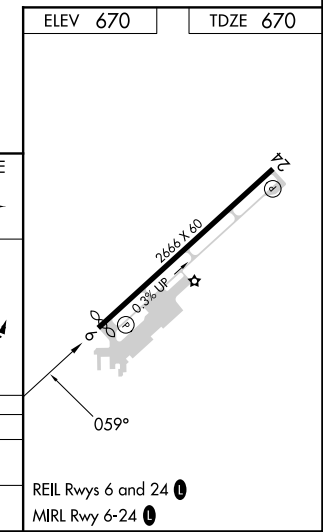
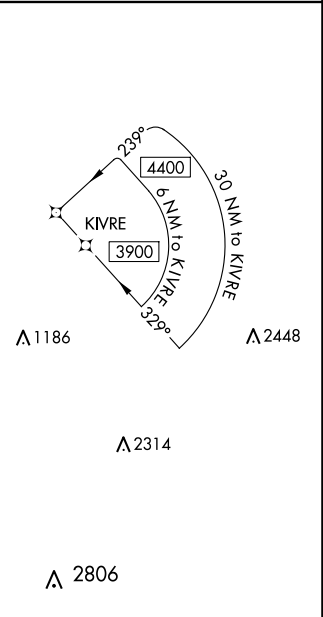
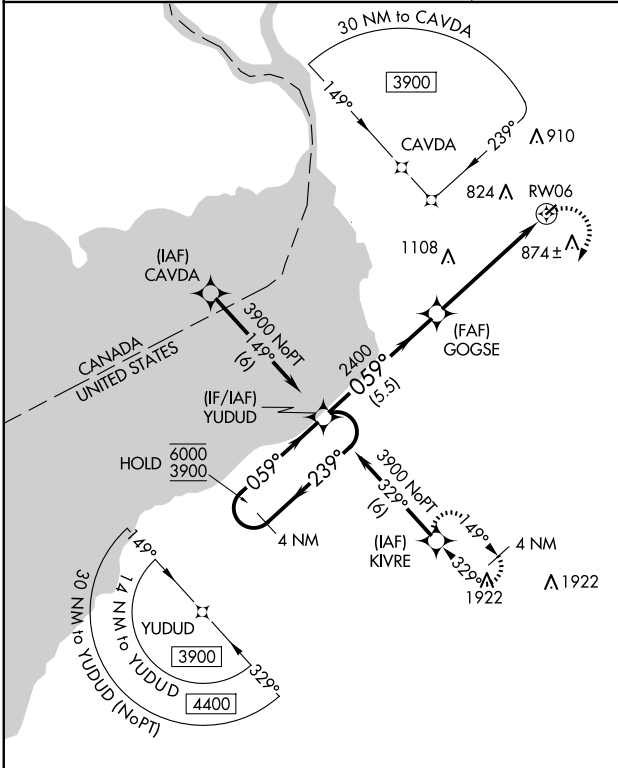
BUFFALO AIRFIELD (9G~~0~~)

RNP APCH.

Procedure NA at night. Rwy 6 helicopter visibility reduction below 1 SM NA. Use Buffalo Niagara Intl altimeter setting.

MISSED APPROACH: Climbing right turn to 3900 direct KIVRE and hold, continue climb in hold to 3900.

BUFFALO APP CON <b>126.15 263.125</b>	UNICOM <b>122.975 (CTAF) 0</b>
--	-----------------------------------



CATEGORY	A	B	C	D
LP MDA	1180-1	510 (600-1)		NA
LNAV MDA	1180-1	510 (600-1)		NA

NE-2, 16 APR 2026 to 14 MAY 2026

NE-2, 16 APR 2026 to 14 MAY 2026