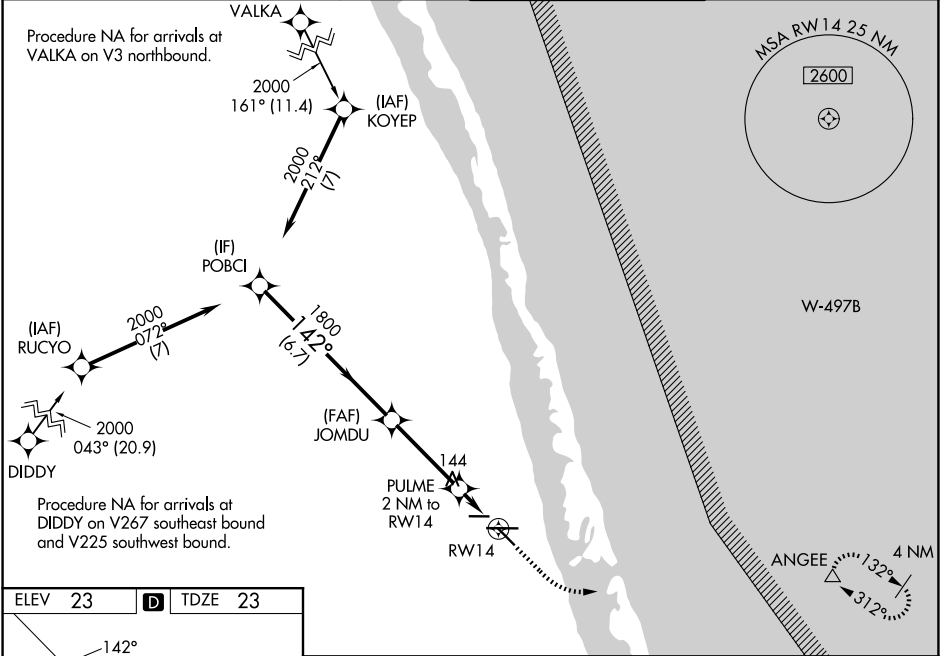


WAAS CH <b>82508</b> <b>W14A</b>	APP CRS <b>142°</b>	Rwy Ldg <b>4755</b> TDZE <b>23</b> Apt Elev <b>23</b>
--	------------------------	---

# RNAV (GPS) RWY 14

TREASURE COAST INTL (FPR)

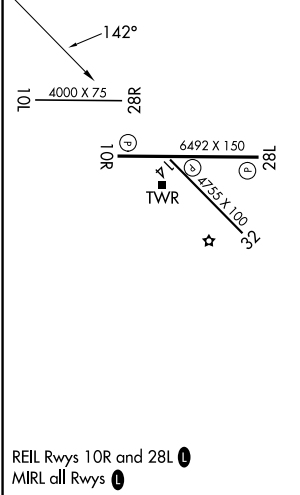
<p><b>⚠</b> Baro-VNAV NA when using Vero Beach altimeter setting. For uncompensated Baro-VNAV systems, LNAV/VNAV NA below -15°C (5°F) or above 43°C (109°F). When VGSI inop, Straight-in/Circling Rwy 14 procedure NA at night. DME/DME RNP-0.3 NA. Helicopter visibility below 1 SM NA. When local altimeter setting not received, use Vero Beach altimeter setting and increase LPV DA to 303, LNAV/VNAV DA to 378 and all MDA 40 feet; increase LNAV visibility Cats C/D ½ SM; increase Circling visibility Cat C/D ¼ SM.</p>		<p>MISSED APPROACH: Climb to 480 then climbing left turn to 2000 direct ANGEE and hold.</p>
<p>ATIS <b>134.825</b></p>	<p>PALM BEACH APP CON <b>132.8</b></p>	<p>FORT PIERCE TOWER ★ <b>128.2</b> (CTAF) <b>0</b></p>
		<p>GND CON (GCO) <b>119.55</b></p>



SE-3, 16 APR 2026 to 14 MAY 2026

SE-3, 16 APR 2026 to 14 MAY 2026

ELEV 23	<b>D</b>	TDZE 23
---------	----------	---------



	480	2000	ANGEE
	↑	↶	△
	*LNAV only.		
GP 3.00° TCH 46	POBCI 2000	JOMDU 1800	PULME 2 NM to RWY 14
	142°	1800	*700
	6.7 NM      3.4 NM      2 NM		
CATEGORY	A	B	C
LPV DA		280-1	257 (300-1)
LNAV/VNAV DA		355-1½	332 (400-1½)
LNAV MDA		400-1	377 (400-1)
CIRCLING	460-1 437 (500-1)	480-1 457 (500-1)	880-2½ 857 (900-2½)
			880-2¾ 857 (900-2¾)