

CONRA THREE DEPARTURE

SC-3, 16 APR 2026 to 14 MAY 2026

DEPARTURE ROUTE DESCRIPTION

TAKEOFF RUNWAY 1: Climb on assigned heading for RADAR vectors to CONRA INT, maintain 3500. Thence. . . .

TAKEOFF RUNWAY 19: Climb on heading 192° to 1900 before turning east. Then climb on assigned heading for RADAR vectors to CONRA INT, maintain 3500. Thence. . . .

. . . .(transition), expect filed altitude 10 minutes after departure.

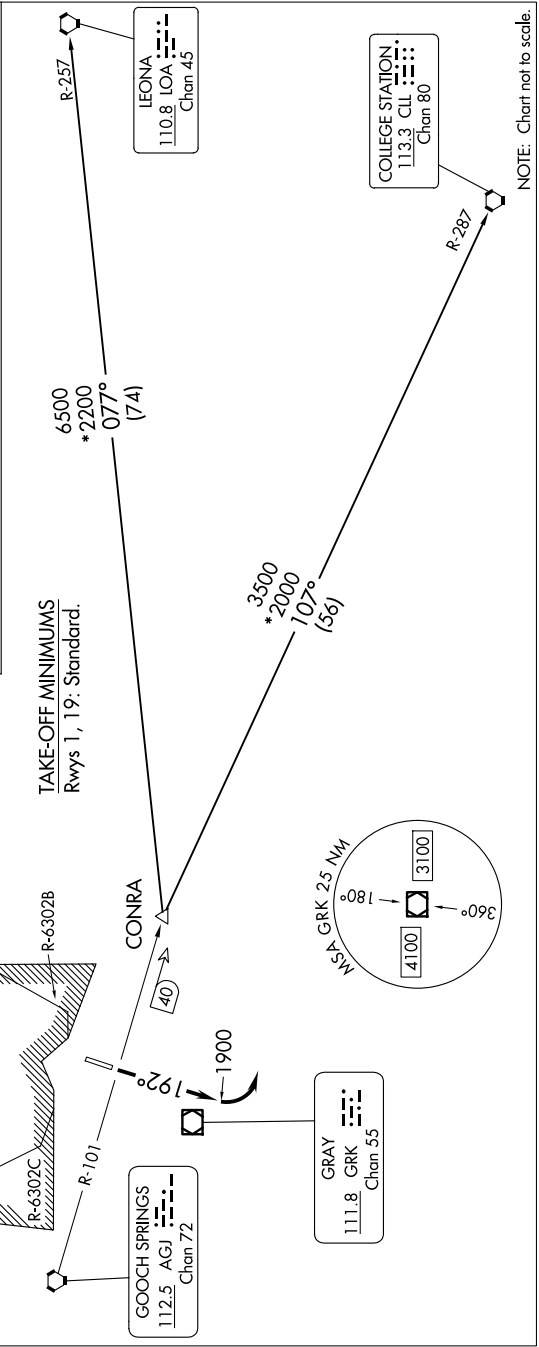
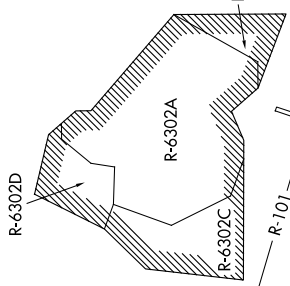
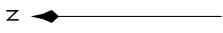
COLLEGE STATION TRANSITION (CONRA3.CLI): From over CONRA INT on CLL R-287 to CLL VORTAC.

LEONA TRANSITION (CONRA3.LOA): From over CONRA INT on LOA R-257 to LOA VORTAC.

RADAR required.

TOP ALTITUDE:
3500

AWOS-3PT 128.575
 CLNC DEL 121.7
 CTAF 122.7
 GRAY DEP CON 120.075 323.15



NOTE: Chart not to scale.

CONRA THREE DEPARTURE

SC-3, 16 APR 2026 to 14 MAY 2026