

WAAS CH 58247 W19A	APP CRS 190°	Rwy Ldg 6376 TDZE 1182 Apt Elev 1182
--	------------------------	---

RNAV (GPS) RWY 19

FORD (IMT)

RNP APCH - GPS.

⚠ Circling NA northeast of Rws 19 and 31. Rwy 19 helicopter visibility reduction below 3/4 SM NA.

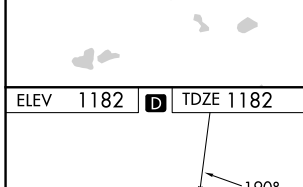
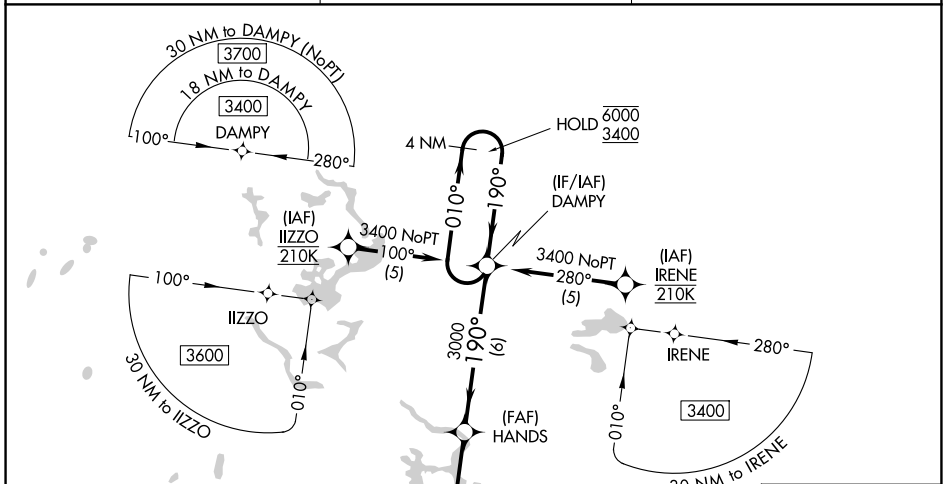
⚠ Circling Rwy 13, 31 NA at night. Baro-VNAV and VDP NA when using ESC altimeter setting.

For uncompensated Baro-VNAV systems, LNAV/VNAV NA below -22°C or above 54°C.

When local altimeter setting not received, use ESC altimeter setting and increase LPV DA to 1645 feet and all visibilities 3/8 SM; increase LNAV/VNAV DA to 1883 feet and all visibilities 1/2 SM; increase all MDAs 180 feet and LNAV visibility Cat C/D 1/2 SM, and Circling visibility Cat C/D 3/4 SM.

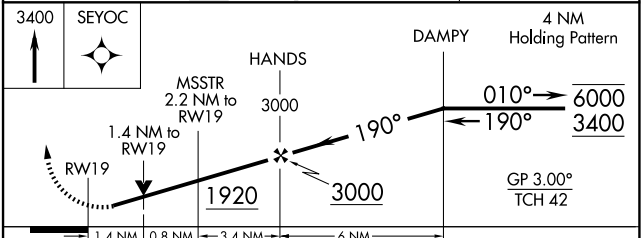
MISSED APPROACH:
Climb to 3400 direct SEYOC and hold.

ASOS 119.025	MINNEAPOLIS CENTER 121.25 322.5	UNICOM 122.8 (CTAF) 0
------------------------	---	---------------------------------



ELEV 1182	D	TDZE 1182
-----------	----------	-----------

MIRL Rwy 13-31 1
HIRL Rwy 1-19 1
REL Rws 19 and 31 1



CATEGORY	A	B	C	D
LPV DA		1465-1	283 (300-1)	
LNAV/VNAV DA		1703-1½	521 (600-1½)	
LNAV MDA	1660-1	478 (500-1)	1660-1¾	478 (500-1¾)
CIRCLING	1660-1 478 (500-1)	1760-1 578 (600-1)	1780-1½ 598 (600-1½)	1880-2¼ 698 (700-2¼)

EC-1, 16 APR 2026 to 14 MAY 2026

EC-1, 16 APR 2026 to 14 MAY 2026