

(ALTNN2.ALTNN) 24137

AL-5349 (FAA)

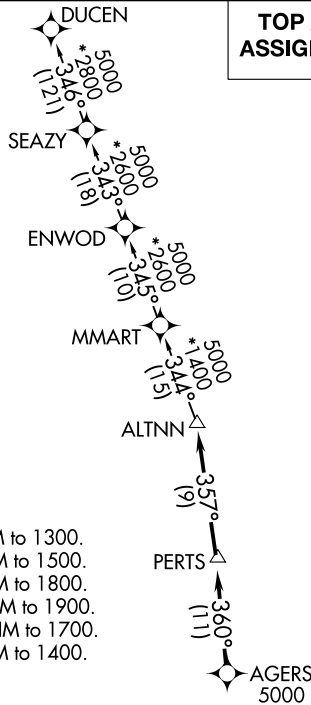
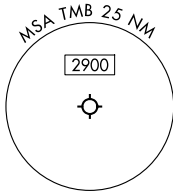
MIAMI EXEC (TMB)
MIAMI, FLORIDA

ALTNN TWO DEPARTURE (RNAV)

MIAMI DEP CON
125.5 354.1
ATIS
124.0
CLNC DEL
133.0
GND CON
121.7
MIAMI EXEC TOWER *
118.9 (CTAF)

RNAV 1 - DME/DME/IRU or GPS.
RADAR required.

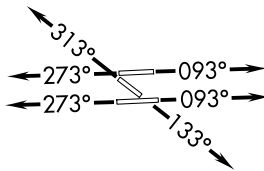
**TOP ALTITUDE:
ASSIGNED BY ATC**



TAKEOFF MINIMUMS

- Rwy 9L: Standard with minimum climb of 500'/NM to 1300.
- Rwy 9R: Standard with minimum climb of 500'/NM to 1500.
- Rwy 13: Standard with minimum climb of 500'/NM to 1800.
- Rwy 27L: Standard with minimum climb of 500'/NM to 1900.
- Rwy 27R: Standard with minimum climb of 500'/NM to 1700.
- Rwy 31: Standard with minimum climb of 500'/NM to 1400.

NOTE: Jet aircraft only.
NOTE: Accelerate to 250K until leaving 10000,
if unable, advise ATC.



NOTE: Chart not to scale.

DEPARTURE ROUTE DESCRIPTION

- TAKEOFF RUNWAYS 9L/R:** Climb on heading 093° or as assigned by ATC for RADAR vectors to cross AGERS at or above 5000, thence. . . .
- TAKEOFF RUNWAY 13:** Climb on heading 133° or as assigned by ATC for RADAR vectors to cross AGERS at or above 5000, thence. . . .
- TAKEOFF RUNWAYS 27L/R:** Climb on heading 273° or as assigned by ATC for RADAR vectors to cross AGERS at or above 5000, thence. . . .
- TAKEOFF RUNWAY 31:** Climb on heading 313° or as assigned by ATC for RADAR vectors to cross AGERS at or above 5000, thence. . . .

. . . . on track 360° to PERTS, then on track 357° to ALTNN, then on assigned transition, maintain ATC assigned altitude, expect filed altitude within 10 minutes after departure.

DUCEN TRANSITION (ALTNN2.DUCEN)

SE-3, 16 APR 2026 to 14 MAY 2026

SE-3, 16 APR 2026 to 14 MAY 2026

ALTNN TWO DEPARTURE (RNAV)
(ALTNN2.ALTNN) 21MAR24

MIAMI, FLORIDA
MIAMI EXEC (TMB)