

MIAMI TWO DEPARTURE
 (MIA2.MIA) 26DEC24

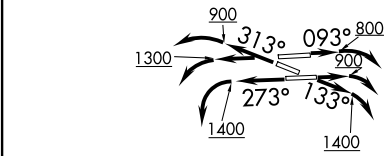
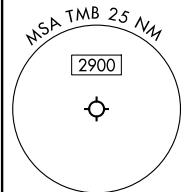
MIAMI TWO DEPARTURE
 (MIA2.MIA) 25331

AL-5349 (FAA)

MIAMI EXEC (TMB)
 MIAMI, FLORIDA

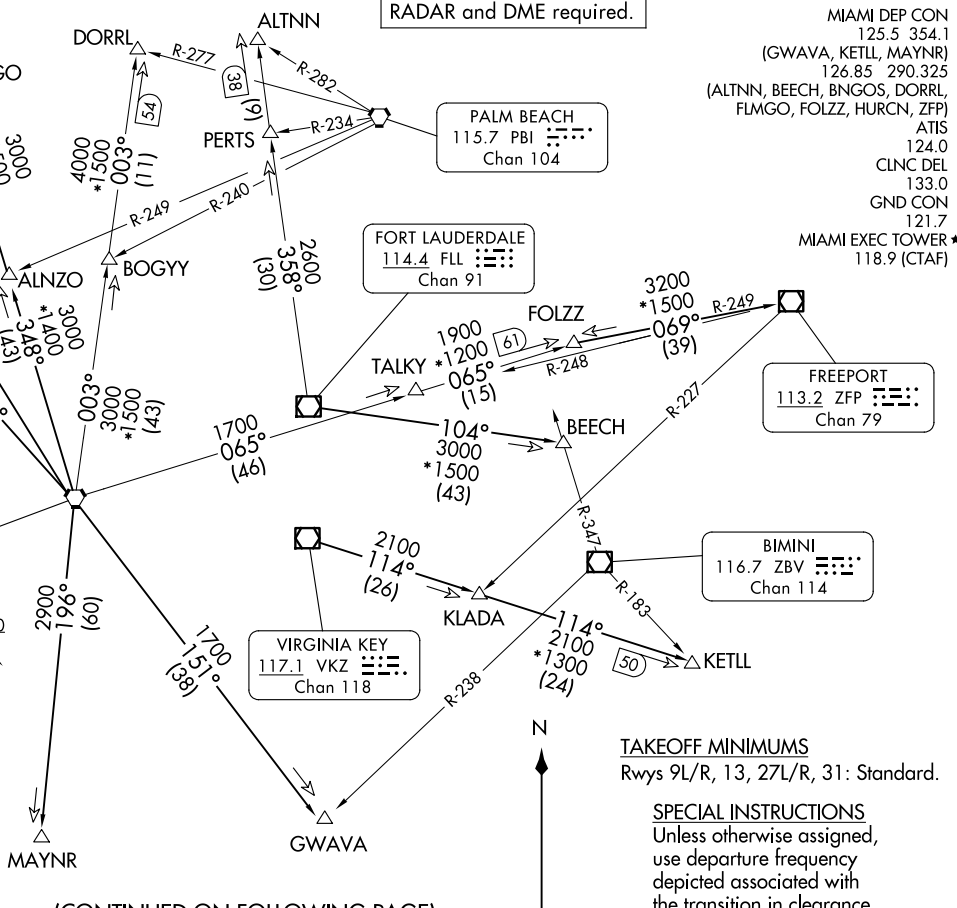
TOP ALTITUDE: AS ASSIGNED BY ATC

RADAR and DME required.



NOTE: Turboprops operate in a manner that will result in best forward speed and climb rate.
 NOTE: File DP in remarks section of flight plan.

NOTE: Chart not to scale.



(CONTINUED ON FOLLOWING PAGE)



TAKEOFF MINIMUMS
 Rwy 9L/R, 13, 27L/R, 31: Standard.

SPECIAL INSTRUCTIONS
 Unless otherwise assigned, use departure frequency depicted associated with the transition in clearance.

MIAMI, FLORIDA
 MIAMI EXEC (TMB)

MIAMI TWO DEPARTURE



DEPARTURE ROUTE DESCRIPTION

- TAKEOFF RUNWAY 9L: Climb on heading 093° to 800 before turning right, thence...
- TAKEOFF RUNWAY 9R: Climb on heading 093° to 900 before turning right, thence...
- TAKEOFF RUNWAY 13: Climb on heading 133° to 1400 before turning right, thence...
- TAKEOFF RUNWAY 27L: Climb on heading 273° to 1400 before turning left, thence...
- TAKEOFF RUNWAY 27R: Climb on heading 273° to 1300 before turning left, thence...
- TAKEOFF RUNWAY 31: Climb on heading 313° to 900 before turning left, thence...

... on transition, maintain ATC assigned altitude. Expect filed altitude 10 minutes after departure.

ALTNN TRANSITION (MIA2.ALTNN): From over FLL VOR/DME on FLL R-358 to ALTNN.

BEECH TRANSITION (MIA2.BEECH): From over FLL VOR/DME on FLL R-104 to BEECH.

BNGOS TRANSITION (MIA2.BNGOS): From over DHP VORTAC on DHP R-321 to BNGOS.

DORRL TRANSITION (MIA2.DORRL): From over DHP VORTAC on DHP R-003 to DORRL.

FLMGO TRANSITION (MIA2.FLMGO): From over DHP VORTAC on DHP R-348 to FLMGO.

FOLZZ TRANSITION (MIA2.FOLZZ): From over DHP VORTAC on DHP R-065 to FOLZZ.

FREEMPT TRANSITION (MIA2.ZFP): From over DHP VORTAC on DHP R-065 to FOLZZ then on ZFP R-249 to ZFP VOR/DME.

GWAVA TRANSITION (MIA2.GWAVA): From over DHP VORTAC on DHP R-151 to GWAVA.

HURCN TRANSITION (MIA2.HURCN): From over DHP VORTAC on DHP R-332 to HURCN.

KETLL TRANSITION (MIA2.KETLL): From over VKZ VOR/DME on VKZ R-114 to KETLL.

MAYNR TRANSITION (MIA2.MAYNR): From over DHP VORTAC on DHP R-196 to MAYNR.

SE-3, 16 APR 2026 to 14 MAY 2026

SE-3, 16 APR 2026 to 14 MAY 2026