

VORTAC FST 116.9 Chan 116	APP CRS 116°	Rwy Ldg TDZE Apt Elev 7508 3002 3011
---	------------------------	--

VOR RWY 12

FORT STOCKTON-PECOS COUNTY (FST)

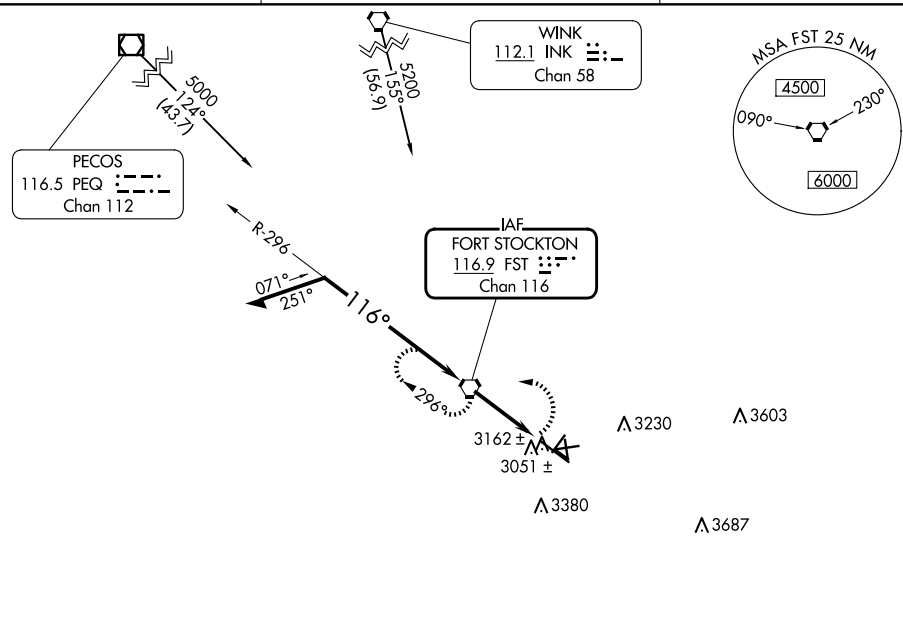
⚠ Circling NA to Rwys 7-25, 11-29 and 16-34.
⚠ Circling Rwy 3, 21, 30 NA at night.

MISSED APPROACH: Climbing left turn to 5000 direct FST VORTAC and hold.

ASOS
118.525

ALBUQUERQUE CENTER
135.875 292.15

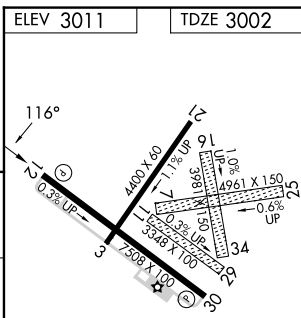
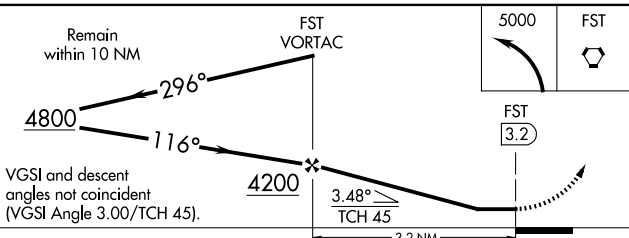
UNICOM
122.8 (CTAF) **0**



SC-3, 16 APR 2026 to 14 MAY 2026

SC-3, 16 APR 2026 to 14 MAY 2026

△ 4064



CATEGORY	A	B	C	D
S-12	3500-1	498 (500-1)	3500-1¼ 498 (500-1¼)	3500-1½ 498 (500-1½)
CIRCLING	3540-1 529 (600-1)	3660-1 649 (700-1)	3740-2 729 (800-2)	3760-2½ 749 (800-2½)

ELEV 3011	TDZE 3002
MIRL Rwys 3-21 and 12-30 0	
FAF to MAP 3.2 NM	
Knots	60 90 120 150 180
Min:Sec	3:12 2:08 1:36 1:17 1:04