

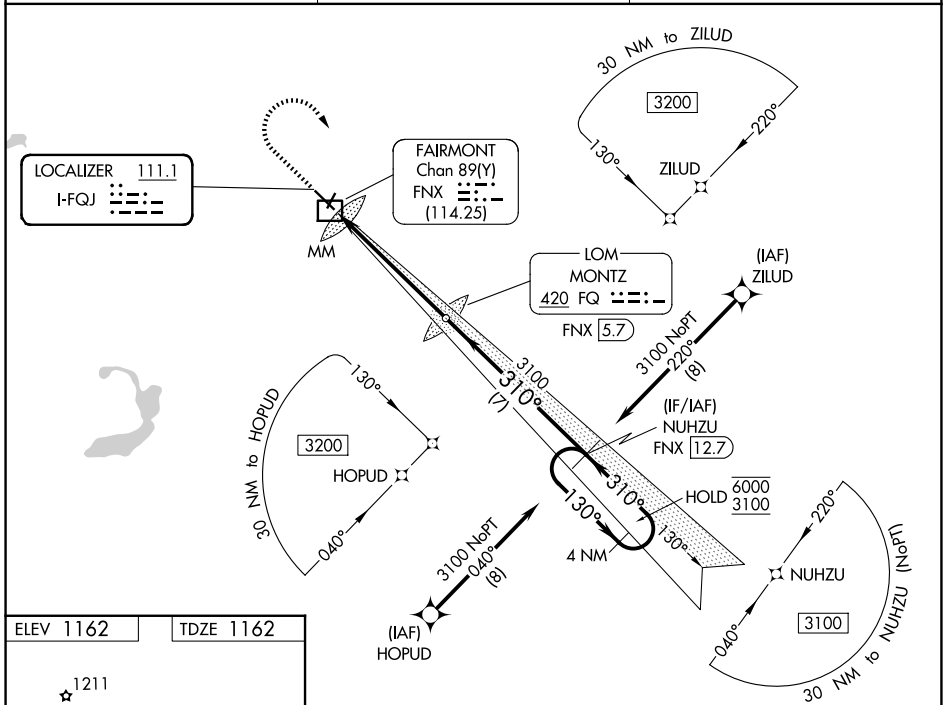
LOC I-FQJ <b>111.1</b>	APP CRS <b>310°</b>	Rwy Ldg <b>5505</b>	TDZE <b>1162</b>
		Apt Elev <b>1162</b>	

# ILS or LOC RWY 31

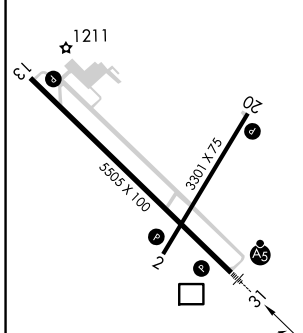
FAIRMONT MUNI (F.R.M)

RNP APCH-GPS. ADF or DME required, LOC only.		MALSR	MISSED APPROACH: Climb to 1800 then climbing right turn to 3100 direct NUHZU and hold.
<p>▼ For inop ALS, increase S-ILS-31 all Cats visibility to 7/8 SM and S-LOC 31</p> <p>▲ NA Cats C/D visibility to 1 3/8 SM. DME from FNX DME. DME use requires simultaneous reception of I-FQJ and FNX DME. Autopilot coupled approach NA below 1480 MSL.</p>			

AWOS-3PT <b>120.025</b>	MINNEAPOLIS CENTER <b>127.75 257.7</b>	UNICOM <b>122.8 (CTAF)</b>
----------------------------	---	-------------------------------



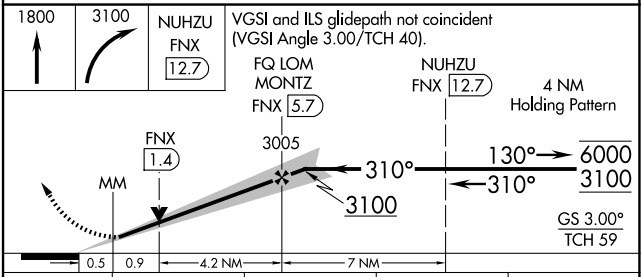
ELEV 1162	TDZE 1162
-----------	-----------



HIRL Rwy 13-31  
MIRL Rwy 2-20  
REIL Rwy 2, 13 and 20

FAF to MAP 5.6 NM

Knots	60	90	120	150	180
Min:Sec	5:36	3:44	2:48	2:14	1:52



CATEGORY	A	B	C	D
S-ILS 31	1480-1/2 318 (400-1/2)			
S-LOC 31	1640-1/2 478 (500-1/2)		1640-1 478 (500-1)	
CIRCLING	1660-1 498 (500-1)		1980-2 1/2 818 (900-2 1/2)	1980-2 3/4 818 (900-2 3/4)

NC-1, 16 APR 2026 to 14 MAY 2026

NC-1, 16 APR 2026 to 14 MAY 2026