

WAAS CH 99305 W28A	APP CRS 284°	Rwy Ldg 5001 TDZE 309 Apt Elev 310
--	------------------------	---

RNAV (GPS) RWY 28

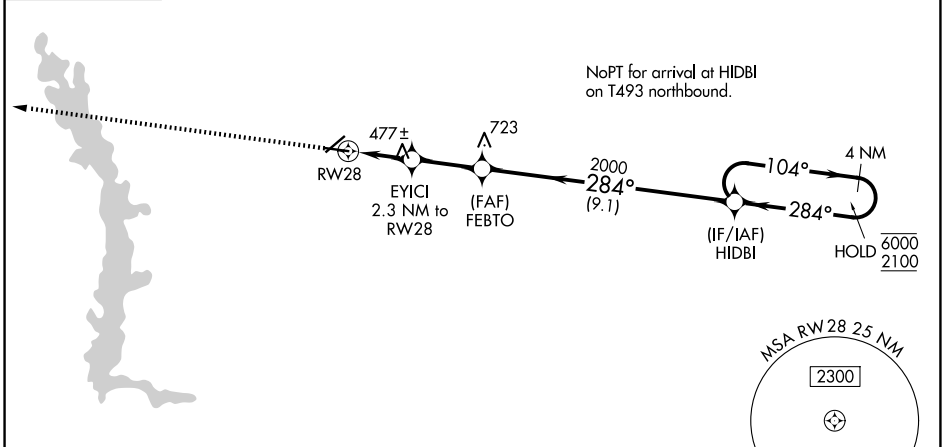
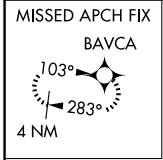
CRISP COUNTY-CORDELE (CKF)

RNP APCH - GPS.

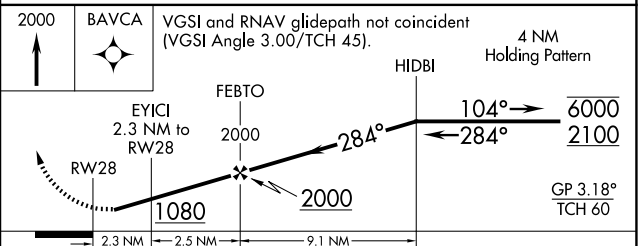
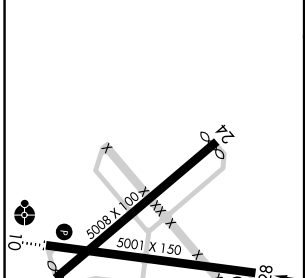
⚠ Rwy 28 helicopter visibility reduction below 1 SM NA. For uncompensated Baro-VNAV systems, LNAV/VNAV NA below -15°C or above 54°C. Straight-in and Circling Rwy 28 NA at night. Circling Rwy 6 and 24 NA at night.

MISSED APPROACH: Climb to 2000 direct BAVCA and hold.

AWOS-3PT 119.325	JACKSONVILLE CENTER 125.75 363.075	UNICOM 123.050 (CTAF) 0
----------------------------	--	-----------------------------------



ELEV 310	TDZE 309
----------	----------



CATEGORY	A	B	C	D
LPV DA	690-1 $\frac{1}{8}$		381 (400-1 $\frac{1}{8}$)	
LNAV/VNAV DA	740-1 $\frac{1}{4}$		431 (500-1 $\frac{1}{4}$)	
LNAV MDA	740-1	431 (500-1)	740-1 $\frac{1}{4}$	431 (500-1 $\frac{1}{4}$)
CIRCLING	780-1 470 (500-1)	820-1 510 (600-1)	1040-2 730 (800-2)	1160-2 $\frac{3}{4}$ 850 (900-2 $\frac{3}{4}$)

MIRL Rwy 10-28 **0**

REIL Rws 10 and 28 **0**

SE-4, 16 APR 2026 to 14 MAY 2026

SE-4, 16 APR 2026 to 14 MAY 2026