

| | | |
|--|------------------------|---|
| WAAS CH 40106 W06A | APP CRS 056° | Rwy Ldg 4882 TDZE 309 Apt Elev 310 |
|--|------------------------|---|

RNAV (GPS) RWY 6

CRISP COUNTY-CORDELE (CKF)

RNP APCH - GPS.

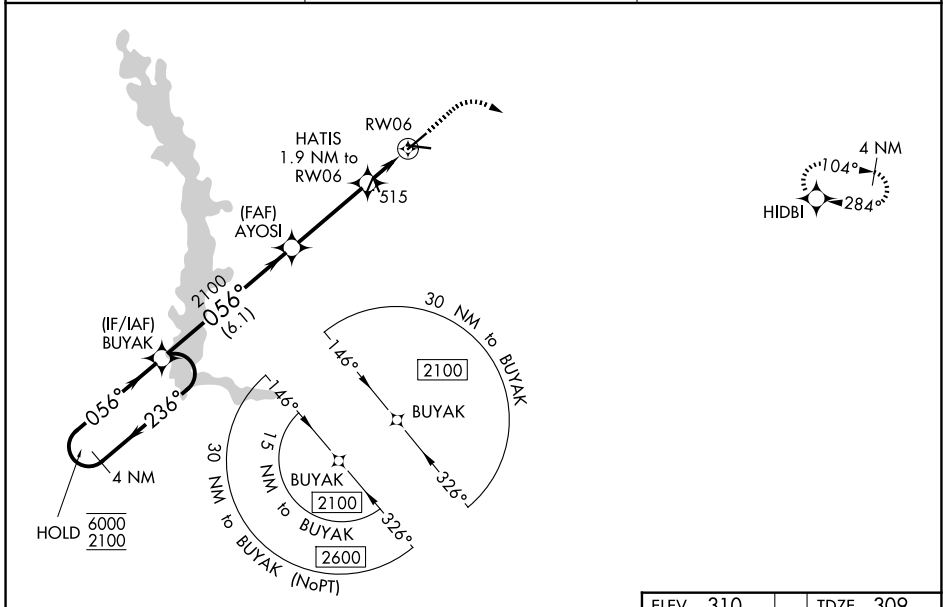
⚠ Rwy 6 helicopter visibility reduction below 1 SM NA. For uncompensated Baro-VNAV systems, LNAV/VNAV NA below -15°C or above 54°C. Straight-in Rwy 6 NA at night, Circling Rwy 6, 24, 28 NA at night.

MISSED APPROACH: Climb to 800 then climbing right turn to 2100 direct HIDBI and hold.

AWOS-3PT
119.325

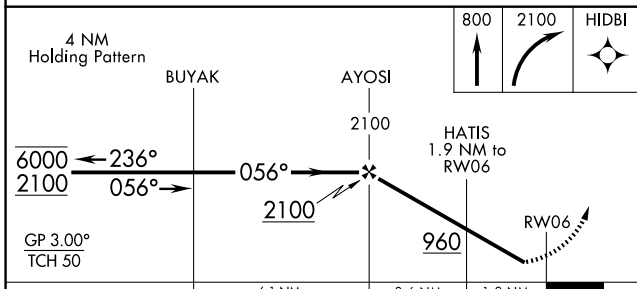
JACKSONVILLE CENTER
125.75 363.075

UNICOM
123.050 (CTAF) 0



SE-4, 16 APR 2026 to 14 MAY 2026

SE-4, 16 APR 2026 to 14 MAY 2026



ELEV 310 TDZE 309

| CATEGORY | A | B | C | D |
|--------------|----------------------|----------------------|-----------------------|-------------------------|
| LPV DA | 578-1 | | 269 (300-1) | |
| LNAV/VNAV DA | 723-1½ | | 414 (500-1½) | |
| LNAV MDA | 780-1 | 471 (500-1) | 780-1¾ | 471 (500-1½) |
| CIRCLING | 780-1 470 (500-1) | 820-1 510 (600-1) | 1040-2 730 (800-2) | 1160-2¾ 850 (900-2¾) |

