

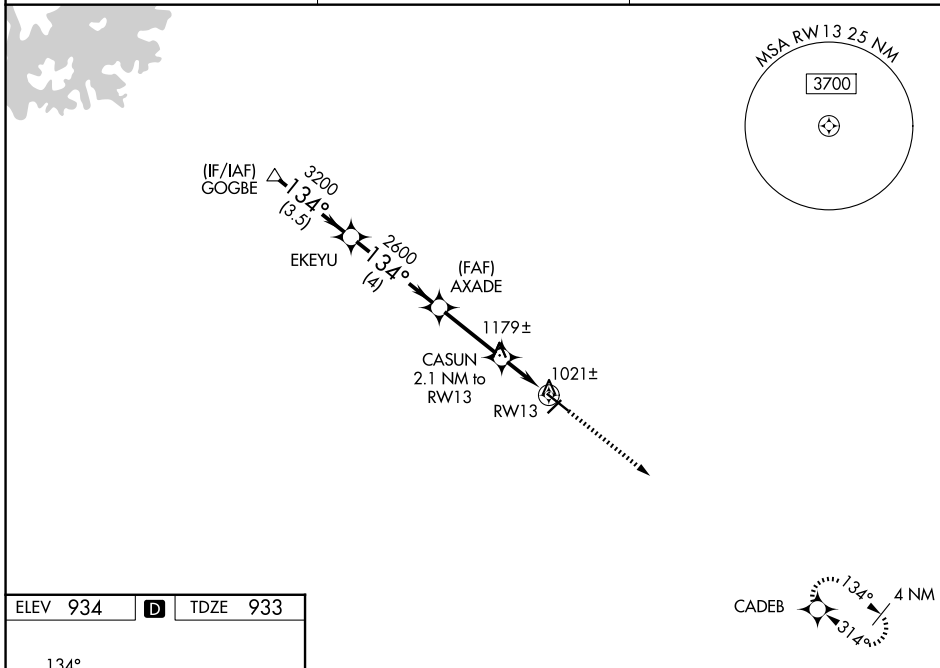
WAAS CH <b>90305</b> <b>W13A</b>	APP CRS <b>134°</b>	Rwy Ldg TDZE Apt Elev	<b>5105</b> <b>933</b> <b>934</b>
--	------------------------	-----------------------------	---

# RNAV (GPS) RWY 13

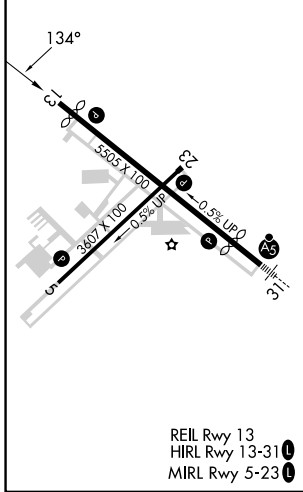
BARROW COUNTY (WDR)

RNP APCH.	MISSED APPROACH: Climb to 3000 direct CADEB and hold.
▼ For uncompensated Baro-VNAV systems, LNAV/VNAV NA below -16°C or above 54°C. Straight-in Rwy 13 NA at night, Circling Rwy 13, 23 NA at night. Rwy 13 helicopter visibility reduction below 1 SM NA.	

AWOS-3 <b>118.575</b>	ATLANTA APP CON ★ <b>132.475 291.1</b>	UNICOM <b>123.0 (CTAF) 0</b>
--------------------------	---	---------------------------------



ELEV 934	<b>D</b>	TDZE 933
----------	----------	----------



VGSi and RNAV glidepath not coincident (VGSi Angle 3.00/TCH 35).				3000 CADEB
GP 3.00° TCH 60				*LNAV only.
GOGBE 3700	EKEYU 3200	AXADE 2600	CASUN 2.1 NM to RW13 *1660	RW13
3.5 NM      4 NM      2.9 NM      2.1 NM				
CATEGORY	A	B	C	D
LPV DA	1207-1		274 (300-1)	
LNAV/VNAV DA	1422-1 $\frac{3}{8}$		489 (500-1 $\frac{3}{8}$ )	
LNAV MDA	1300-1		367 (400-1)	
CIRCLING	1400-1 466 (500-1)	1580-1 646 (700-1)	1660-2 726 (800-2)	1660-2 $\frac{1}{4}$ 726 (800-2 $\frac{1}{4}$ )

SE-4, 16 APR 2026 to 14 MAY 2026

SE-4, 16 APR 2026 to 14 MAY 2026