

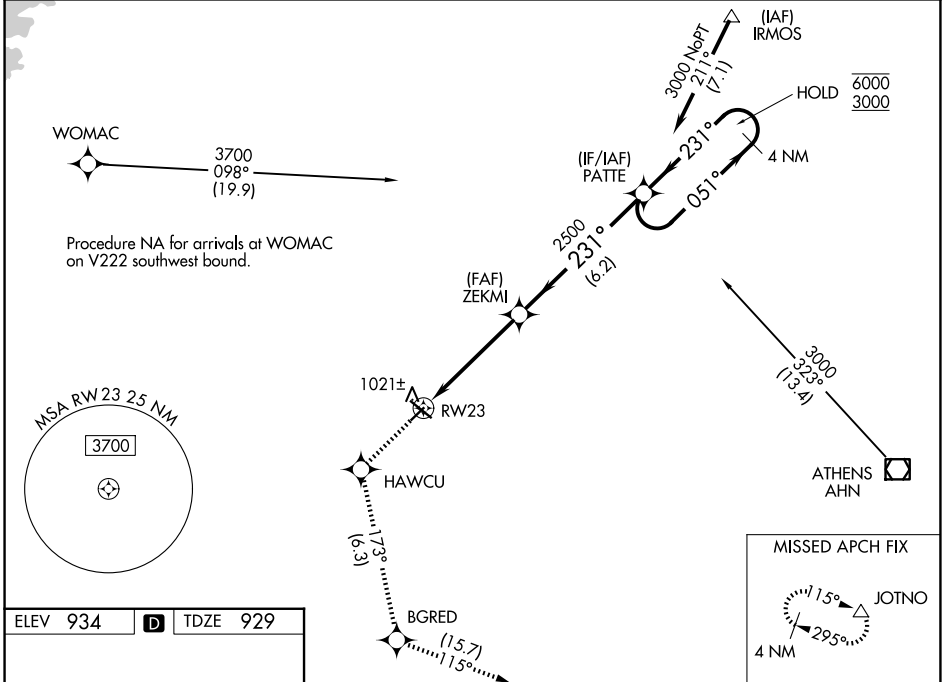
WAAS CH 82516 W23A	APP CRS 231°	Rwy Ldg TDZE Apt Elev	3607 929 934
--	------------------------	-----------------------------	---

RNAV (GPS) RWY 23

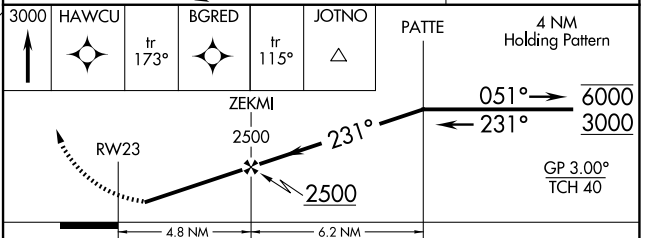
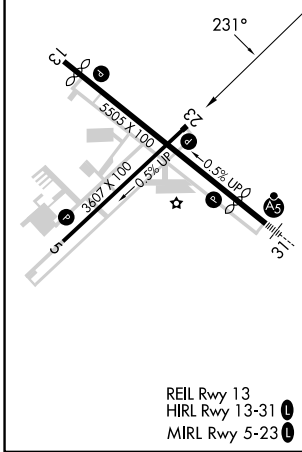
BARROW COUNTY (WDR)

RNP APCH.	MISSED APPROACH: Climb to 3000 direct HAWCU and on track 173° to BGRED and on track 115° to JOTNO and hold.
-----------	---

AWOS-3 118.575	ATLANTA APP CON ★ 132.475 291.1	UNICOM 123.0 (CTAF)
--------------------------	---	-------------------------------



ELEV 934	D	TDZE 929
----------	----------	----------



CATEGORY	A	B	C	D
LPV DA		1179-1	250 (300-1)	
LNAV/VNAV DA		1274-1	345 (400-1)	
LNAV MDA	1320-1	391 (400-1)	1320-1½	391 (400-1½)
CIRCLING	1400-1 466 (500-1)	1580-1 646 (700-1)	1660-2 726 (800-2)	1660-2¼ 726 (800-2¼)

SE-4, 16 APR 2026 to 14 MAY 2026

SE-4, 16 APR 2026 to 14 MAY 2026