

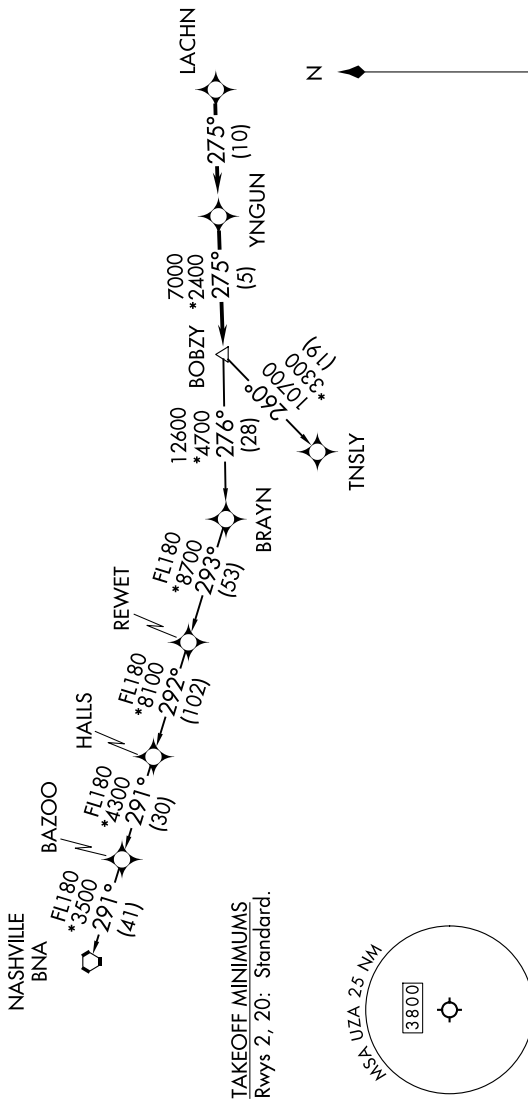
BOBZY FIVE DEPARTURE (RNAV)

ROCK HILL, SOUTH CAROLINA

CHARLOTTE DEP CON
120.05 307.8
ASOS
120.775
UNICOM
123.05

RNAV 1-DME/DME/IRU or GPS.
RADAR required.

TOP ALTITUDE:
3000



- NOTE:** For turbo jets only.
- NOTE:** If unable to accept climb rates, advise ATC on initial contact.
- NOTE:** Transponder code will be issued via PDC or Charlotte CLNC DEL.
- NOTE:** Upon reaching 10000 MSL, accelerate to and maintain 280K, if unable advise ATC.

NOTE: Chart not to scale.

DEPARTURE ROUTE DESCRIPTION

Climb on heading assigned by ATC, on RADAR vectors to LACHN, then on depicted route to BOBZY, then on assigned transition. Maintain 3000. Expect clearance to filed altitude within 10 minutes after departure.

NASHVILLE TRANSITION (BOBZY5.BNA)
TNSLY TRANSITION (BOBZY5.TNSLY)