


LOC/DME I- UZA	APP CRS	Rwy Ldg	5500
108.5	016°	TDZE	666
Chan 22		Apt Elev	666

ILS or LOC RWY 2

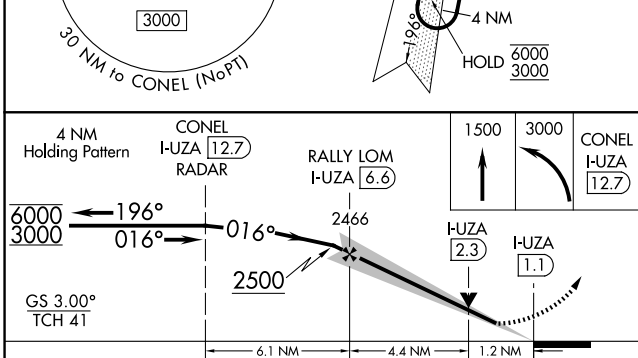
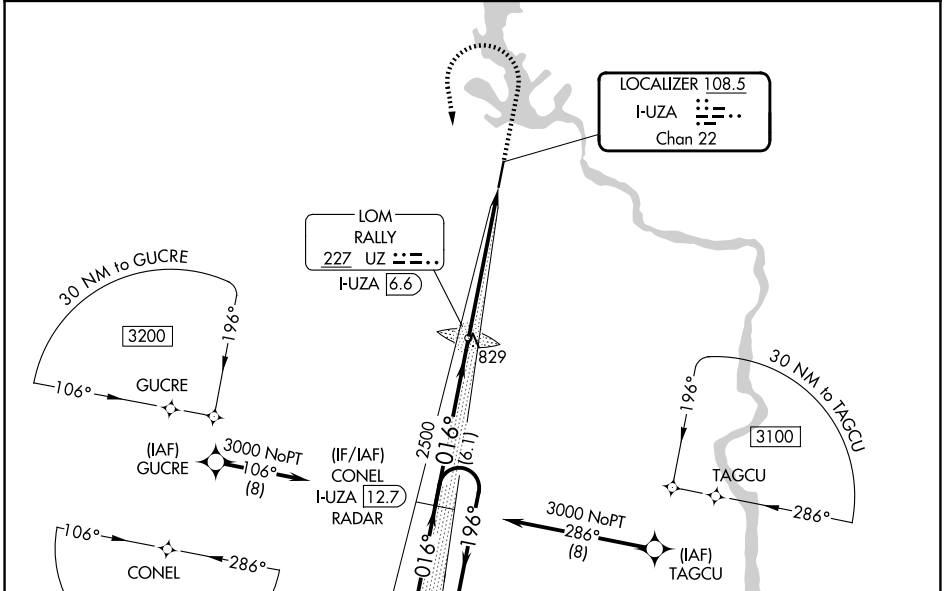
ROCK HILL/YORK COUNTY/BRYANT FLD (UZA)

RNP APCH-GPS.

▽
▲ VDP NA when using CLT altimeter setting. When local altimeter setting not received, use CLT altimeter setting and increase S-ILS 2 DA to 910 feet; increase all MDAs 60 feet and S-LOC 2 visibility Cat C and D ¼ SM. For inop ALS, increase S-LOC 2 Cat C and D visibility to 1½ SM.

MALSR  MISSED APPROACH: Climb to 1500 then climbing left turn to 3000 direct CONEL and hold.

ASOS 120.775	CHARLOTTE APP CON 120.05 307.8	GCO 121.725	UNICOM 123.05 (CTAF) 📻
------------------------	--	-----------------------	---



ELEV 666	TDZE 666
----------	----------

FAF to MAP 5.5 NM					
Knots	60	90	120	150	180
Min:Sec	5:30	3:40	2:45	2:12	1:50

CATEGORY	A	B	C	D
S-ILS 2	866-½		200 (200-½)	
S-LOC 2	1080-½	414 (500-½)	1080-¾	414 (500-¾)
CIRCLING	1140-1 474 (500-1)	1160-1 494 (500-1)	1340-2 674 (700-2)	1340-2¼ 674 (700-2¼)

SE-2, 16 APR 2026 to 14 MAY 2026

SE-2, 16 APR 2026 to 14 MAY 2026