

(KWEEN5.KWEEN) 24081

AL-5361 (FAA)

KWEEN FIVE DEPARTURE (RNAV)

ROCK HILL/YORK COUNTY/BRYANT FLD (UZA)
ROCK HILL, SOUTH CAROLINA

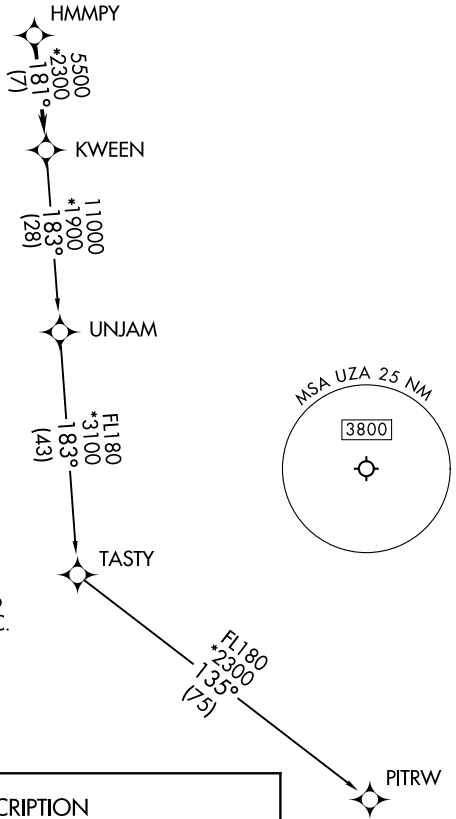
CHARLOTTE DEP CON
120.05 307.8
ASOS
120.775
UNICOM
123.05

RNAV 1 - DME/DME/IRU or GPS.

RADAR required.

**TOP ALTITUDE:
3000**

TAKEOFF MINIMUMS
Rwys 2, 20: Standard.



- NOTE: For turbo jets only.
- NOTE: Transponder code will be issued via PDC or Charlotte CLNC DEL.
- NOTE: If unable to accept climb rates, advise ATC on initial contact.
- NOTE: Upon reaching 10000 MSL, accelerate to and maintain 280K, if unable advise ATC.

NOTE: Chart not to scale.

DEPARTURE ROUTE DESCRIPTION

Climb on heading assigned by ATC, on RADAR vectors to HMMPY, then on track 181° to KWEEN, then on assigned transition, maintain 3000, expect filed altitude within 10 minutes after departure.

- PITRW TRANSITION (KWEEN5.PITRW)
- UNJAM TRANSITION (KWEEN5.UNJAM)

KWEEN FIVE DEPARTURE (RNAV)
(KWEEN5.KWEEN) 21MAR24

ROCK HILL, SOUTH CAROLINA
ROCK HILL/YORK COUNTY/BRYANT FLD (UZA)

SE-2, 16 APR 2026 to 14 MAY 2026

SE-2, 16 APR 2026 to 14 MAY 2026