

WAAS CH 90325 W20A	APP CRS 196°	Rwy Ldg TDZE Apt Elev	5500 662 666
--	------------------------	-----------------------------	---

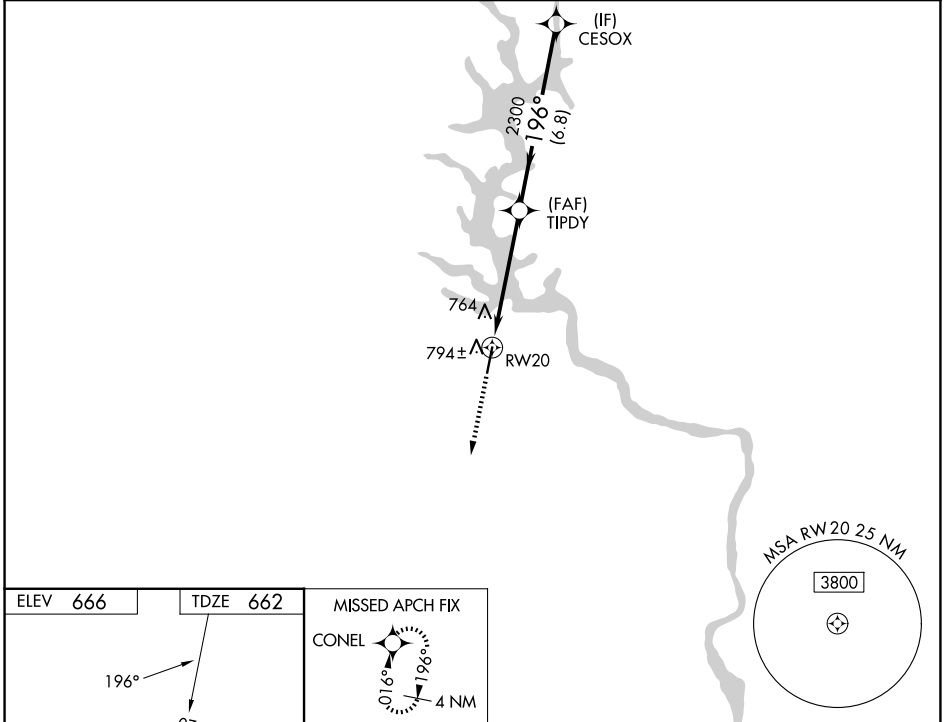
RNAV (GPS) RWY 20
ROCK HILL/YORK COUNTY/BRYANT FLD (UZA)

RNP APCH-GPS.

⚠ For uncompensated Baro-VNAV systems, procedure NA below -16°C or above 39°C.
⚠ When local altimeter setting not received, use Charlotte/Douglas Intl altimeter setting and increase LPV DA to 957 feet, LNAV/VNAV DA to 1084 feet, and all MDAs 60 feet; increase LPV visibility all Cats 1/8 SM, LNAV/VNAV visibility all Cats 1/4 SM, and LNAV visibility Cat C/D 1/4 SM. VDP and Baro-VNAV NA when using Charlotte/Douglas Intl altimeter setting. Rwy 20 helicopter visibility reduction below 3/4 SM NA.

MISSED APPROACH: Climb to 3000 direct CONEL and hold.

ASOS 120.775	CHARLOTTE APP CON 120.05 307.8	GCO 121.725	UNICOM 123.05 (CTAF) 0
------------------------	--	-----------------------	----------------------------------



ELEV 666	TDZE 662	MISSED APCH FIX																												
		*INAV only. *1.1 NM to RWY 20. 1.1 NM, 3.9 NM, 6.8 NM. GP 3.00° TCH 40.																												
		<table border="1"> <tr> <td>CATEGORY</td> <td>A</td> <td>B</td> <td>C</td> <td>D</td> </tr> <tr> <td>LPV DA</td> <td colspan="2">912-3/4</td> <td colspan="2">250 (300-3/4)</td> </tr> <tr> <td>LNAV/VNAV DA</td> <td colspan="4">1039-1 377 (400-1)</td> </tr> <tr> <td>LNAV MDA</td> <td colspan="2">1060-1 398 (400-1)</td> <td colspan="2">1060-1 398 (400-1)</td> </tr> <tr> <td>CIRCLING</td> <td>1140-1 474 (500-1)</td> <td>1160-1 494 (500-1)</td> <td>1340-2 674 (700-2)</td> <td>1340-2 1/4 674 (700-2 1/4)</td> </tr> </table>				CATEGORY	A	B	C	D	LPV DA	912-3/4		250 (300-3/4)		LNAV/VNAV DA	1039-1 377 (400-1)				LNAV MDA	1060-1 398 (400-1)		1060-1 398 (400-1)		CIRCLING	1140-1 474 (500-1)	1160-1 494 (500-1)	1340-2 674 (700-2)	1340-2 1/4 674 (700-2 1/4)
CATEGORY	A	B	C	D																										
LPV DA	912-3/4		250 (300-3/4)																											
LNAV/VNAV DA	1039-1 377 (400-1)																													
LNAV MDA	1060-1 398 (400-1)		1060-1 398 (400-1)																											
CIRCLING	1140-1 474 (500-1)	1160-1 494 (500-1)	1340-2 674 (700-2)	1340-2 1/4 674 (700-2 1/4)																										