

WAAS CH 78032 W18A	APP CRS 181°	Rwy ldg 4098 TDZE 573 Apt Elev 573
--	------------------------	---

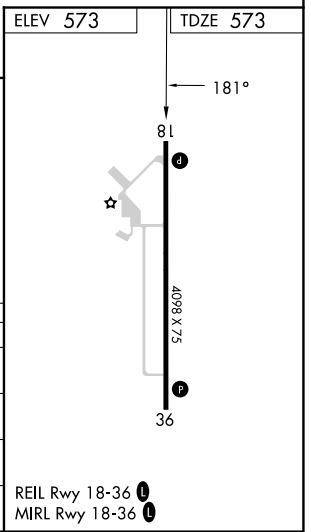
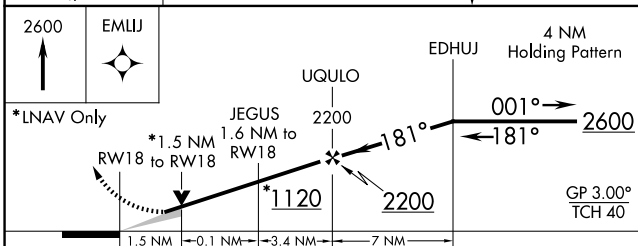
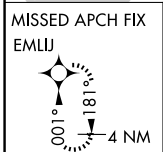
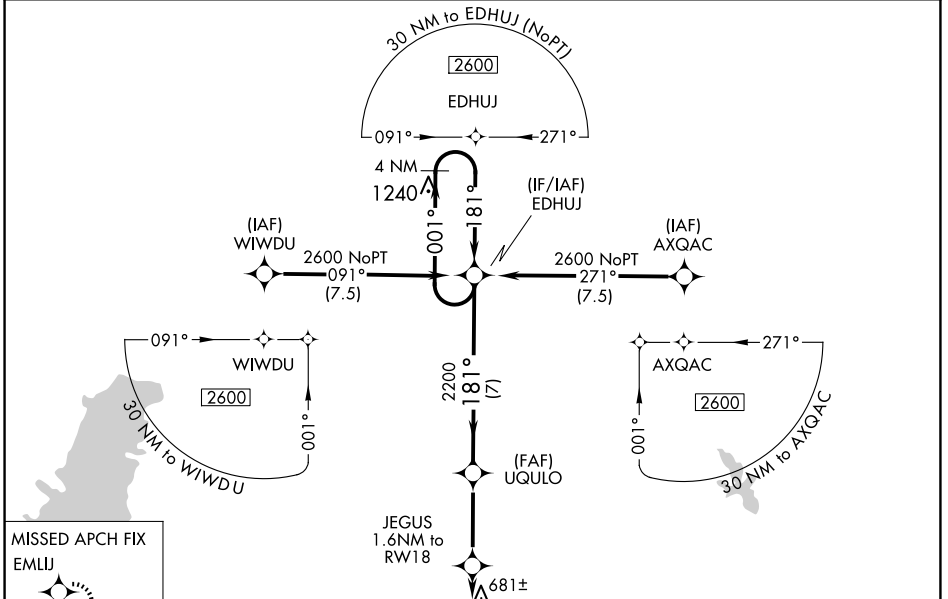
RNAV (GPS) RWY 18

SALEM-LECKRONE (SLO)

⚠ Baro-VNAV NA when using Centralia altimeter setting. For uncompensated Baro-VNAV systems, LNAV/VNAV NA below -21°C (-5°F) or above 54°C (130°F). When local altimeter setting not received, use Centralia altimeter setting: increase LPV DA to 801 feet; increase LNAV/VNAV DA to 890 feet and visibility 1/8 SM; increase all MDAs 40 feet and LNAV Cats C/D visibility 1/8 SM and Circling Cats C/D visibility 1/4 SM. DME/DME RNP-0.3 NA.

MISSED APPROACH:
Climb to 2600 direct EMLIJ and hold.

AWOS-3PT 118.525	KANSAS CITY CENTER 127.7 351.825	UNICOM 122.725 (CTAF) 0
----------------------------	--	-----------------------------------



CATEGORY	A	B	C	D
LPV DA		773-1	200 (200-1)	
LNAV/VNAV DA		862-1	289 (300-1)	
LNAV MDA		940-1	367 (400-1)	
CIRCLING	1040-1	467 (500-1)	1380-2 1/4 807 (900-2 1/4)	1380-2 1/2 807 (900-2 1/2)

REIL Rwy 18-36 **0**
MIRL Rwy 18-36 **0**

EC-3, 16 APR 2026 to 14 MAY 2026

EC-3, 16 APR 2026 to 14 MAY 2026