

WAAS CH 99501 W16A	APP CRS 159°	Rwy Ldg TDZE Apt Elev	5003 1278 1278
--	------------------------	-----------------------------	---

RNAV (GPS) RWY 16

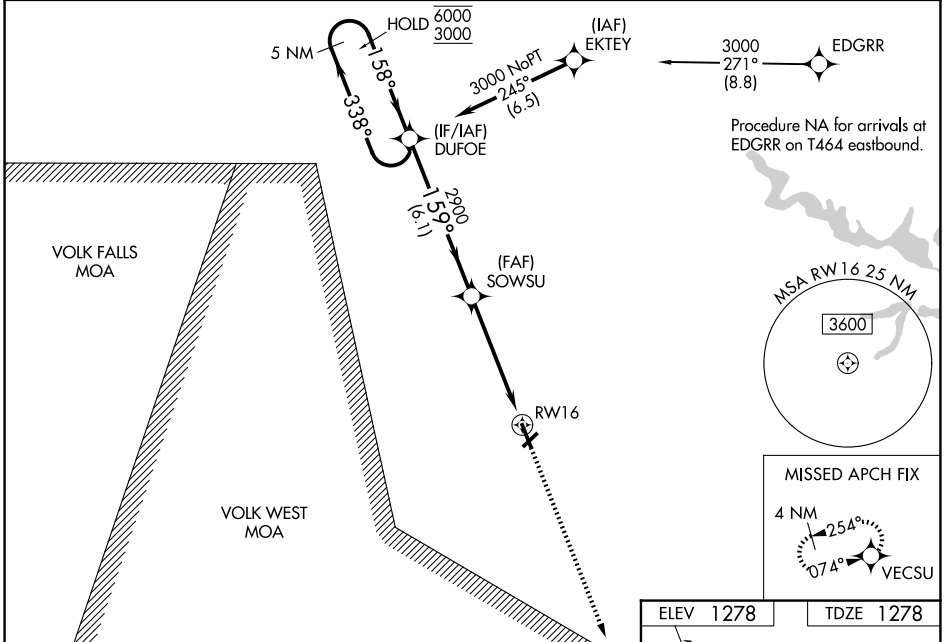
MARSHFIELD MUNI (MFI)

RNP APCH - GPS.

⚠ Baro-VNAV and VDP NA when using CWA altimeter setting. For uncompensated Baro-VNAV systems, LNAV/VNAV NA below -22°C or above 54°C. Rwy 16 helicopter visibility reduction below 3/4 SM NA. When local altimeter setting not received, use CWA altimeter setting and increase all DA 56 feet and LPV visibilities 1/8 SM; increase LNAV/VNAV visibilities 1/4 SM; increase all MDAs 60 feet and LNAV visibility Cat C/D 1/4 SM.

MISSED APPROACH:
Climb to 3000 direct VECSU and hold.

ASOS 121.575	MINNEAPOLIS CENTER 124.4 317.7	UNICOM 123.0 (CTAF)
------------------------	--	-------------------------------



5 NM Holding Pattern

VGSI and RNAV glidepath not coincident (VGSI Angle 3.00/TCH 33).

3000 VECSU

DUFOE

SOWSU

6000 ← 338°

3000 → 158°

GP 3.00° TCH 45

2900

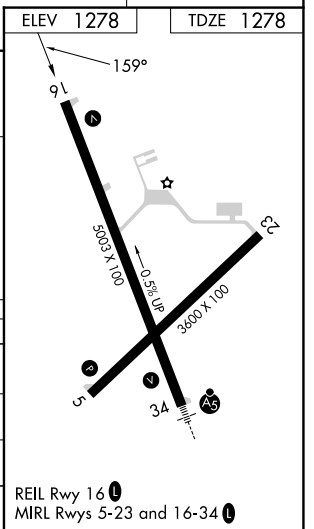
1.5 NM to RWY 16

6.1 NM

3.5 NM

1.5 NM

CATEGORY	A	B	C	D
LPV DA	1639-1 361 (400-1)			
LNAV/VNAV DA	1695-1 1/8 417 (500-1 1/8)			
LNAV MDA	1780-1	502 (600-1)	1780-1 3/8	502 (600-1 3/8)
CIRCLING	1780-1	502 (600-1)	2020-2 1/4 742 (800-2 1/4)	2020-2 1/2 742 (800-2 1/2)



EC-3, 16 APR 2026 to 14 MAY 2026

EC-3, 16 APR 2026 to 14 MAY 2026