

WAAS CH 70732 W23A	APP CRS 227°	Rwy Ldg TDZE Apt Elev	3600 1258 1278
--	------------------------	-----------------------------	---

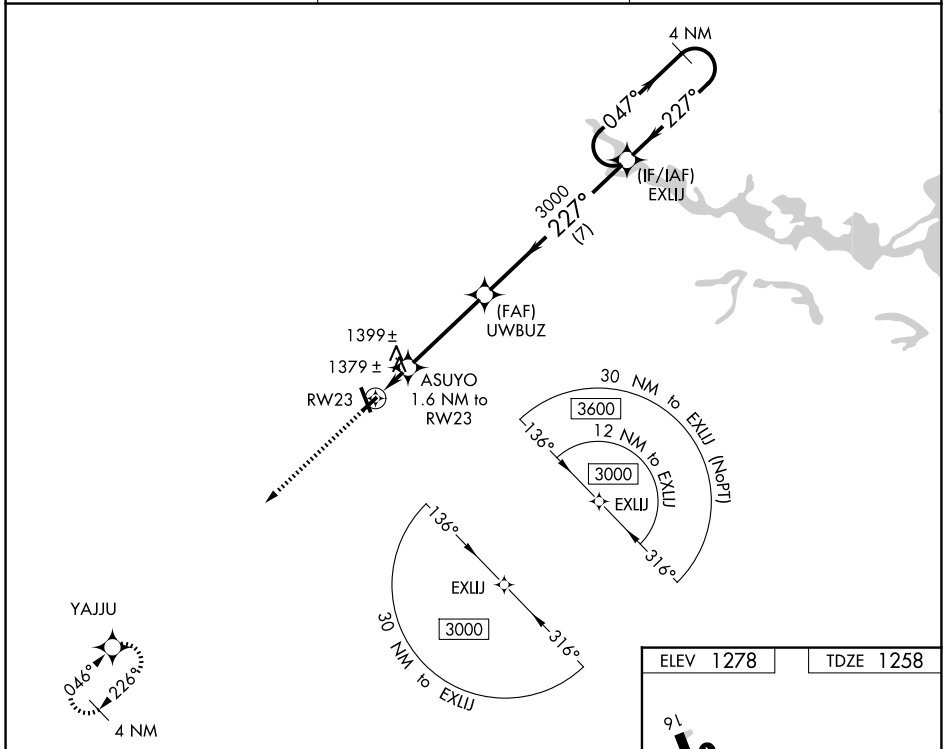
RNAV (GPS) RWY 23

MARSHFIELD MUNI (MFI)

⚠ DME/DME RNP-0.3 NA. Helicopter visibility reduction below 3/4 SM NA. When local altimeter setting not received, use Central Wisconsin altimeter setting and increase all MDA 60 feet, increase LP and LNAV visibility Cat C/D 1/4 mile.

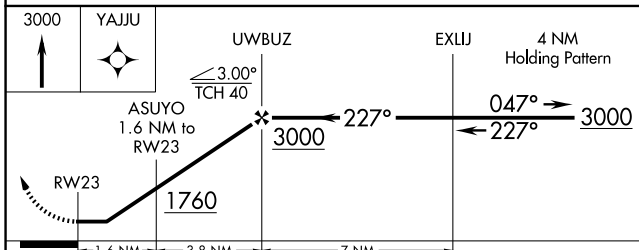
MISSED APPROACH:
Climb to 3000 direct YAJJU and hold.

ASOS 121.575	MINNEAPOLIS CENTER 124.4 317.7	UNICOM 123.0 (CTAF) 0
------------------------	--	---------------------------------

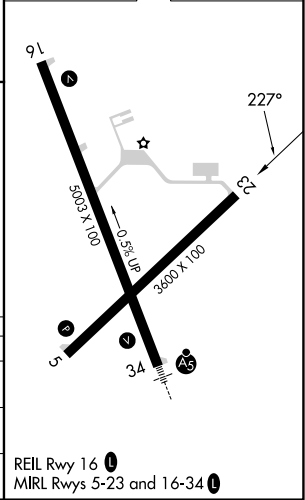


EC-3, 16 APR 2026 to 14 MAY 2026

EC-3, 16 APR 2026 to 14 MAY 2026



ELEV 1278	TDZE 1258
-----------	-----------



CATEGORY	A	B	C	D
LP MDA	1640-1	382 (400-1)	1640-1 1/8	382 (400-1 1/8)
LNAV MDA	1660-1	402 (400-1)	1660-1 1/8	402 (400-1 1/8)
CIRCLING	1760-1	482 (500-1)	2020-2 1/4 742 (800-2 1/4)	2020-2 1/2 742 (800-2 1/2)

REIL Rwy 16 0
MIRL Rwy 5-23 and 16-34 0