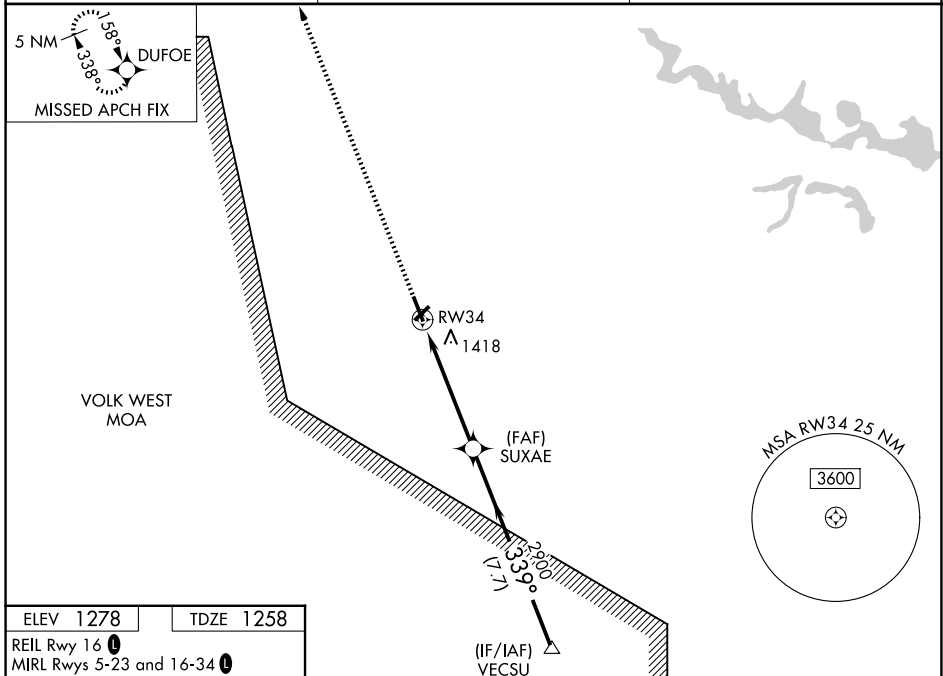


|  |                        |   |
|--|------------------------|---|
| WAAS<br>CH <b>58101</b><br><b>W34A</b> | APP CRS<br><b>339°</b> | Rwy Ldg<br>TDZE <b>1258</b><br>Apt Elev <b>1278</b> |
|--|------------------------|---|

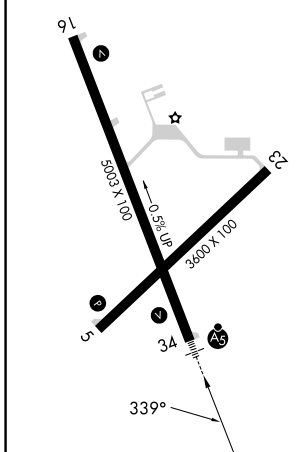
# RNAV (GPS) RWY 34

MARSHFIELD MUNI (MFI)

|   |  |                               |  |
|---|--|-------------------------------|--|
| <p>For inoperative MALSR increase LPV all Cats visibility to 1, increase LNAV Cats A and B to 1 and Cat D to 1/4. If local altimeter setting not received, use Central Wisconsin altimeter setting and increase all DAs/MDAs 60 feet. VDP and Baro-VNAV NA when using Central Wisconsin altimeter setting. For uncompensated Baro-VNAV systems, LNAV/VNAV NA below -17° C (2° F) or above 46° C (115° F). DME/DME RNP-0.3 NA.</p> |  | <p>MALSR</p>                  | <p>MISSED APPROACH: Climb to 3000 direct DUFOE and hold.</p> |
| ASOS<br><b>121.575</b>  | MINNEAPOLIS CENTER<br><b>124.4 317.7</b> | UNICOM<br><b>123.0 (CTAF)</b> |  |



|             |                         |
|-------------|-------------------------|
| ELEV 1278   | TDZE 1258               |
| REIL Rwy 16 | MIRL Rwy 5-23 and 16-34 |



|              |                  |        |                               |                    |
|--------------|------------------|--------|-------------------------------|--------------------|
| 3000         | DUFOE            | SUXAE  | VECSU                         | Procedure Turn NA  |
| * LNAV only  | * 1.2 NM to RW34 | 2900   | 2900                          | GP 3.00°<br>TCH 42 |
| 1.2          | 3.8 NM           | 7.7 NM |                               |                    |
| CATEGORY     | A                | B      | C                             | D                  |
| LPV DA       | 1508-3/4         |        | 250 (300-3/4)                 |                    |
| LNAV/VNAV DA | 1718-1/4         |        | 460 (500-1/4)                 |                    |
| LNAV MDA     | 1680-3/4         |        | 422 (500-3/4)                 |                    |
|              |                  |        | 1680-1<br>422 (500-1)         |                    |
| CIRCLING     | 1760-1 3/4       |        | 482 (500-1 3/4)               |                    |
|              |                  |        | 2020-2 1/4<br>742 (800-2 1/4) |                    |
|              |                  |        | 2020-2 1/2<br>742 (800-2 1/2) |                    |