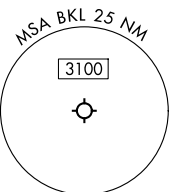
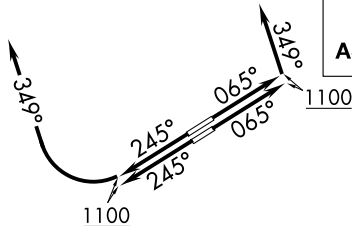


CAVVS FIVE DEPARTURE (RNAV)

CLEVELAND DEP CON
125.35 346.325
ATIS 125.25
CLNC DEL
339.8
121.9 (when twr closed)
GND CON 121.9 339.8
LAKEFRONT TOWER ★
124.3 (CTAF) 339.8

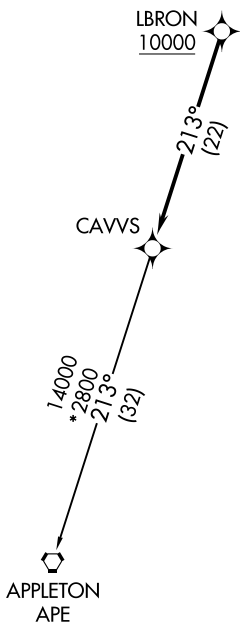
**TOP ALTITUDE:
ASSIGNED BY ATC**



RNAV 1 - DME/DME/IRU or GPS.
RADAR required.

EC-2, 16 APR 2026 to 14 MAY 2026

EC-2, 16 APR 2026 to 14 MAY 2026



TAKEOFF MINIMUMS:

- Rwys 6L, 24R: Standard with minimum climb of 500' per NM to 1100.
- Rwy 6R: Standard with minimum climb of 500' per NM to 1100. NA when control tower closed.
- Rwy 24L: 400-1 $\frac{3}{4}$ or standard with minimum climb of 757' per NM to 1000. NA when control tower closed.

NOTE: Rwy 6R/24L: Takeoff minimums NA when control tower closed.



DEPARTURE ROUTE DESCRIPTION

TAKEOFF RUNWAYS 6L/R: Climb on heading 065° to 1100, then on heading 349° or as assigned by ATC, maintain 2000 (do not climb above 2000) for RADAR vectors to cross LBRON at or above 10000, thence....

TAKEOFF RUNWAYS 24L/R: Climb on heading 245° to 1100, then right turn heading 349° or as assigned by ATC, maintain 2000 (do not climb above 2000) for RADAR vectors to cross LBRON at or above 10000, thence....

....on track 213° to CAVVS, then on (transition).

Maintain ATC assigned altitude, expect filed altitude ten minutes after departure.

APPLETON TRANSITION (CAVVS5.APE)

NOTE: Chart not to scale.

CAVVS FIVE DEPARTURE (RNAV)