

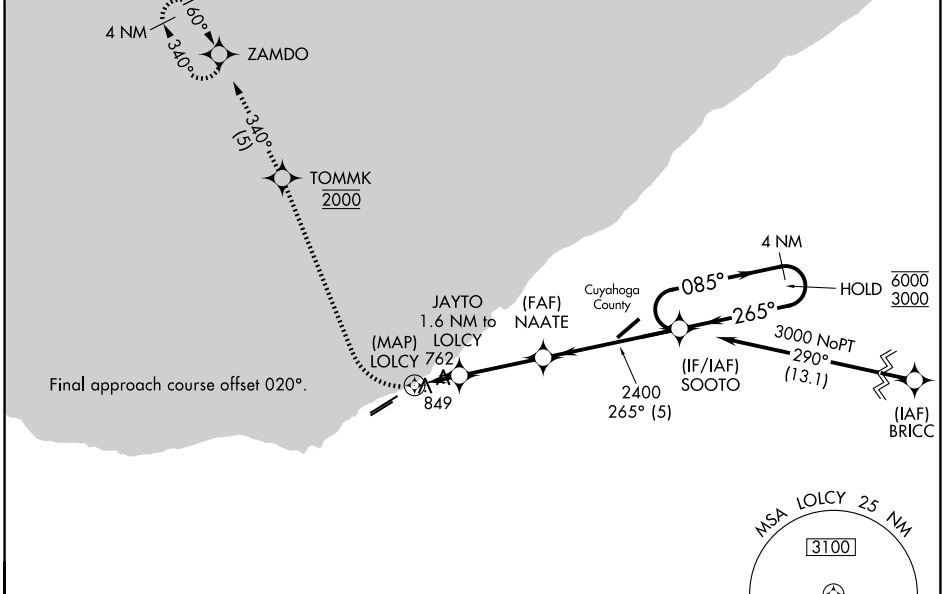
WAAS CH 77621 W24A	APP CRS 265°	Rwy Ldg 6003 TDZE 583 Apt Elev 584
--	------------------------	---

RNAV (GPS) RWY 24R

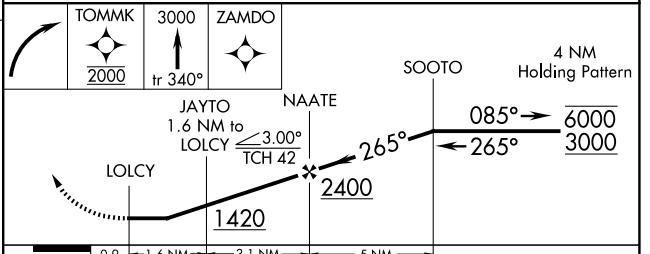
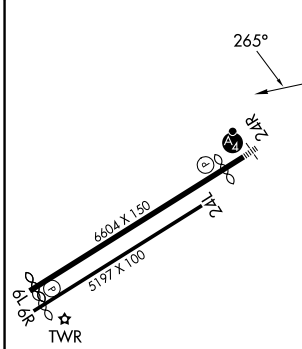
BURKE LAKEFRONT (BKL)

RNP APCH - GPS.	MALSF	MISSED APPROACH: Climbing right turn direct TOMMK, cross TOMMK at 2000, then climb to 3000 on track 340° to ZAMDO and hold.
<p>▼ Rwy 24R helicopter visibility reduction below 3/4 SM NA.</p> <p>▲ Circling Rwy 6R NA at night. Circling NA southeast of Rwy 6R-24L.</p> <p>For inop ALS, increase LNAV Cat C/D visibility to 1 3/8 SM.</p> <p>Circling Rwy 6R, 24L NA when tower closed.</p>		

ATIS 125.25	CLEVELAND APP CON 125.35 346.325	LAKEFRONT TOWER * 124.3 (CTAF) 0 339.8	GND CON 121.9 339.8	UNICOM 122.95 0
-----------------------	--	--	-------------------------------	---------------------------



ELEV 584	D	TDZE 583
----------	----------	----------



CATEGORY	A	B	C	D
LP MDA	1020-3/4	437 (500-3/4)	1020-1	437 (500-1)
LNAV MDA	1100-3/4	517 (600-3/4)	1100-1 1/4	517 (600-1 1/4)
CIRCLING	1100-1	516 (600-1)	1140-1 1/2	1220-2
			556 (600-1 1/2)	636 (700-2)

- REIL Rwy 6L 0
- REIL Rwy 24L
- HIRL Rwy 6L-24R 0
- HIRL Rwy 6R-24L

EC-2, 16 APR 2026 to 14 MAY 2026

EC-2, 16 APR 2026 to 14 MAY 2026