

ZAAPA SIX DEPARTURE (RNAV)

EC-2, 16 APR 2026 to 14 MAY 2026

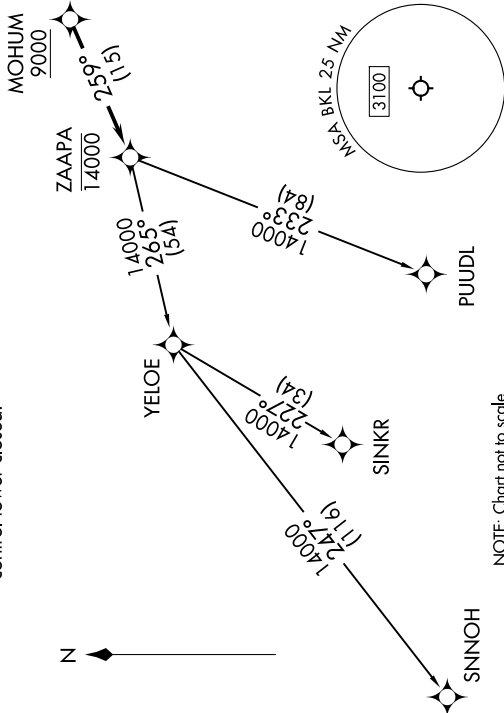
**TOP ALTITUDE:
ASSIGNED BY ATC**

RNAV 1 - DME/DME/IRU or GPS.
RADAR required.

CLEVELAND DEP CON 125.35 346.325 ATIS 125.25 CINIC DEL 339.8 121.9 (when twr closed) GND CON 121.9 339.8 LAKEFRONT TOWER* 124.3 (CTAF) 339.8
--

TAKEOFF MINIMUMS:
 Rwy 6L, 24R: Standard with minimum climb of 500' per NM to 1100.
 Rwy 6R: Standard with minimum climb of 500' per NM to 1100. NA when control tower closed.
 Rwy 24L: 400-1³/₄ or standard with minimum climb of 757' per NM to 1000. NA when control tower closed.

NOTE: PUUDL TRANSITION: For aircraft at or below FL220 only or as assigned by ATC.
NOTE: Rwy 6R/24L: Takeoff minimums NA when control tower closed.



NOTE: Chart not to scale.

ZAAPA SIX DEPARTURE (RNAV)

(ZAAPA6.ZAAPA) 27NOV25

CLEVELAND, OHIO

BURKE LAKEFRONT (BKL)

DEPARTURE ROUTE DESCRIPTION

TAKEOFF RUNWAY 6L/R: Climb on heading 065° to 1100, then on heading 349° or as assigned by ATC, maintain 2000 (do not climb above 2000) for RADAR vectors to cross MOHUM at or above 9000, thence....
TAKEOFF RUNWAY 24L/R: Climb on heading 245° to 1100, then right turn heading 349° or as assigned by ATC, maintain 2000 (do not climb above 2000) for RADAR vectors to cross MOHUM at or above 9000, thence....

....on track 259° to cross ZAAPA at or below 14000, then on (transition). Maintain ATC assigned altitude, expect filed altitude ten minutes after departure.

PUUDL TRANSITION (ZAAPA6.PUUDL)
SINKR TRANSITION (ZAAPA6.SINKR)
SNNOH TRANSITION (ZAAPA6.SNNOH)

EC-2, 16 APR 2026 to 14 MAY 2026