

WAAS CH 93929 W36A	APP CRS 005°	Rwy Ldg TDZE Apt Elev	6503 862 866
--	------------------------	-----------------------------	---

RNAV (GPS) RWY 36

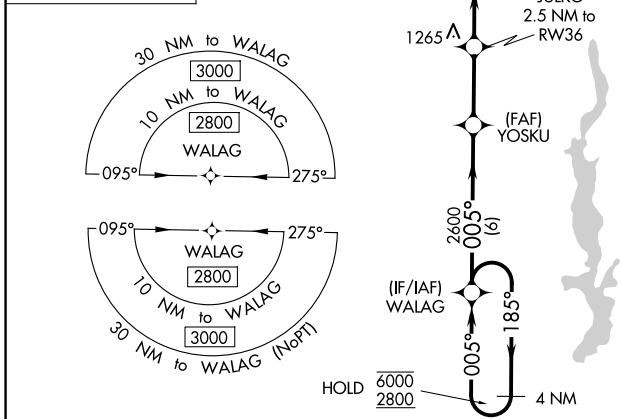
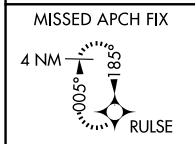
METTEL FLD (CEV)

RNP APCH.

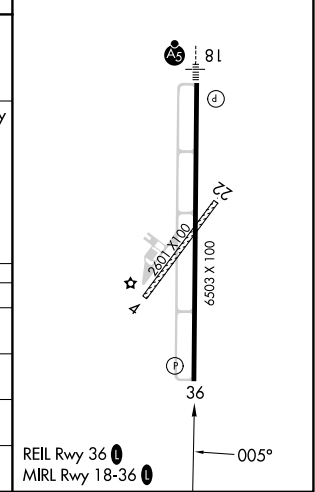
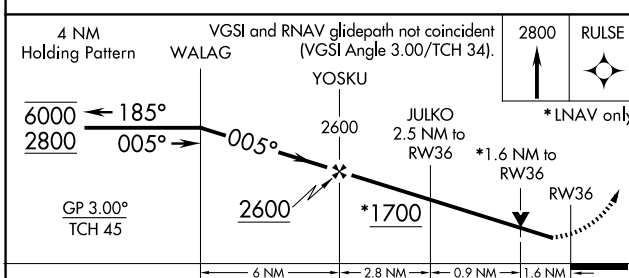
NA For uncompensated Baro-VNAV systems, LNAV/VNAV NA below -16°C or above 54°C. VDP and Baro VNAV NA when using James M. Cox Dayton Intl altimeter setting. Rwy 36 helicopter visibility reduction below 3/4 SM NA. Circling Rwy 4, 22 NA at night. When local altimeter setting not received, use James M Cox Dayton Intl altimeter setting and increase LPV DA to 1253 feet and visibility all Cats to 1 1/8 SM, LNAV/VNAV DA to 1472 feet and visibility all Cats to 1 1/4 SM, increase all MDA 140 feet and LNAV Cats C/D visibility to 1 1/8 SM, Circling Cat B to 1 1/4 SM, Cat C to 2 3/4 SM, and Cat D to 3 SM.

MISSED APPROACH: Climb to 2800 direct RULSE and hold.

AWOS-3 118.325	COLUMBUS APP CON 134.45 352.05	UNICOM 122.8 (CTAF) 0
--------------------------	--	---------------------------------



ELEV 866	TDZE 862
----------	----------



CATEGORY	A	B	C	D
LPV DA	1132-7/8 270 (300-7/8)			
LNAV/VNAV DA	1351-1 3/8 489 (500-1 3/8)			
LNAV MDA	1400-1	538 (600-1)	1400-1 1/2	538 (600-1 1/2)
CIRCLING	1440-1 574 (600-1)	1540-1 674 (700-1)	1620-2 1/4 754 (800-2 1/4)	1620-2 1/2 754 (800-2 1/2)

EC-2, 16 APR 2026 to 14 MAY 2026

EC-2, 16 APR 2026 to 14 MAY 2026