

WAAS CH <b>69630</b> <b>W05A</b>	APP CRS <b>050°</b>	Rwy Ldg TDZE Apt Elev	<b>5005</b> <b>3427</b> <b>3443</b>
--	------------------------	-----------------------------	---

# RNAV (GPS) RWY 5

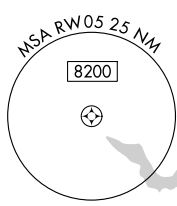
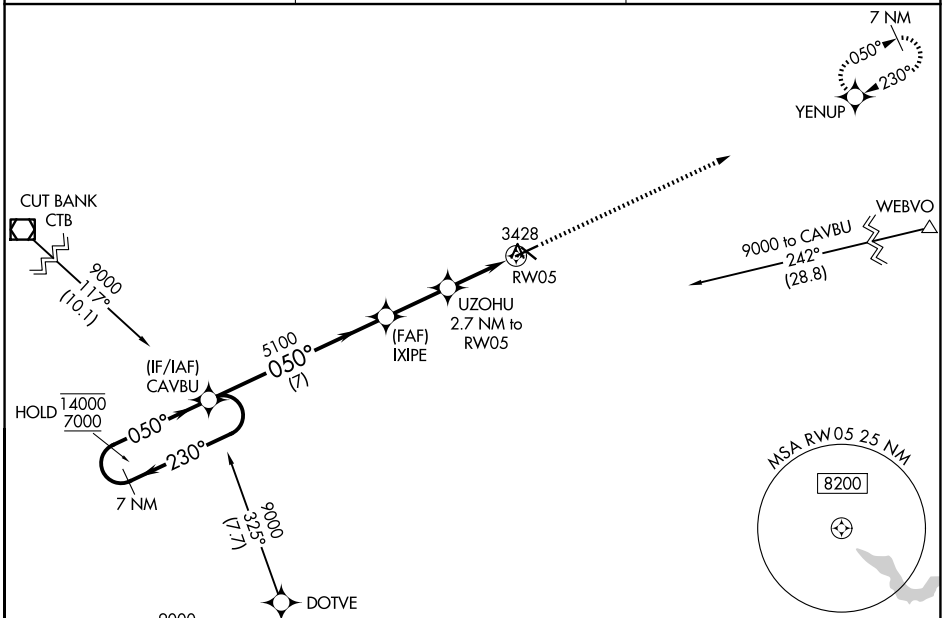
SHELBY (SBX)

RNP APCH - GPS.

**⚠** Baro-VNAV and VDP NA when using Cut Bank altimeter setting. For uncompensated Baro-VNAV systems, LNAV/VNAV NA below -21°C or above 54°C. When local altimeter setting not received, use Cut Bank altimeter setting.

**⚠** MISSED APPROACH: Climb to 9000 direct YENUP and hold, continue climb-in-hold to 9000.

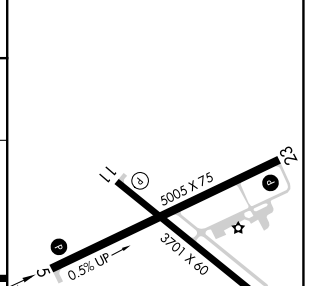
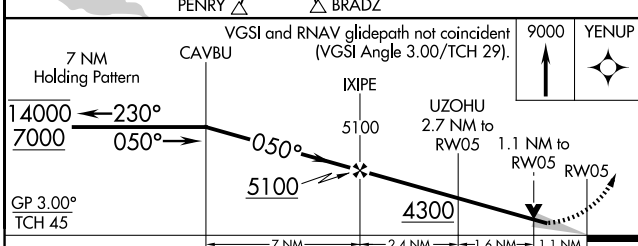
AWOS-3PT <b>128.325</b>	SALT LAKE CITY CENTER <b>133.4 285.4</b>	UNICOM <b>122.8 (CTAF) 0</b>
----------------------------	---	---------------------------------



NW-1, 16 APR 2026 to 14 MAY 2026

NW-1, 16 APR 2026 to 14 MAY 2026

ELEV 3443	TDZE 3427
-----------	-----------



CATEGORY	A	B	C	D
LPV DA		3733-1	306 (300-1)	
LNAV/VNAV DA		3783-1	356 (400-1)	
LNAV MDA		3800-1	373 (400-1)	
CIRCLING	4020-1 577 (600-1)	4080-1 637 (700-1)	4100-1¾ 657 (700-1¾)	4220-2½ 777 (800-2½)

MIRL Rwy 5-23 and 11-29 0