

LOC I-GLR <b>111.1</b>	APP CRS <b>096°</b>	Rwy Ldg <b>6579</b>
		TDZE <b>1321</b>
		Apt Elev <b>1328</b>


# ILS or LOC RWY 9

GAYLORD RGNL (G.L.R.)

ADF required. RADAR required for procedure entry.

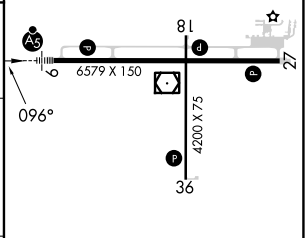
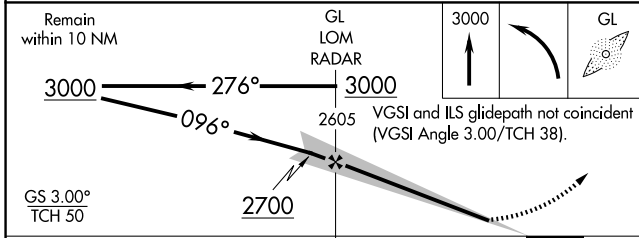
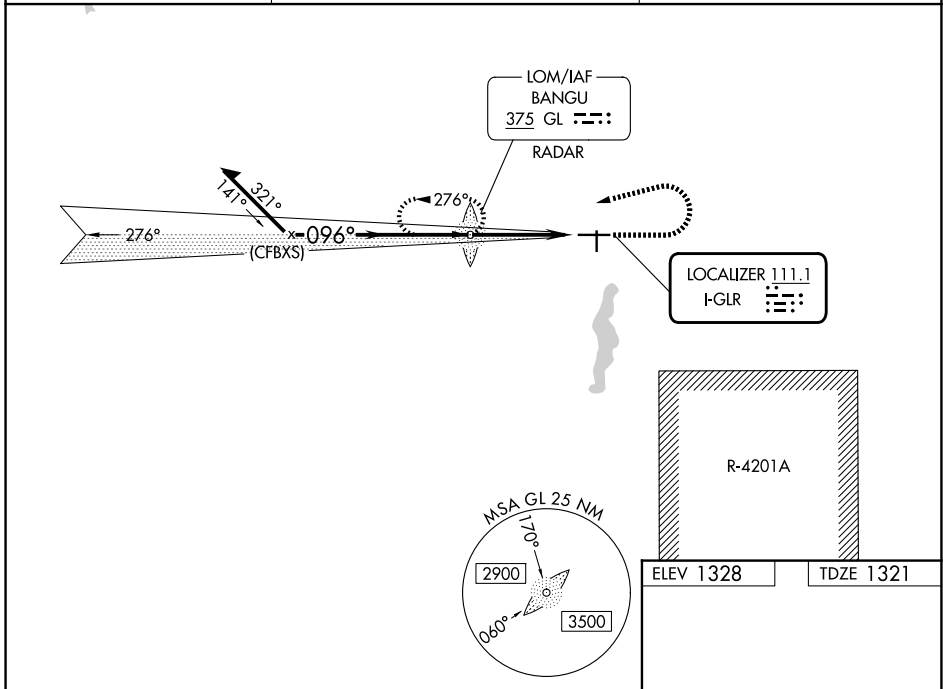
**▽** Circling Rwy 18, 36 NA at night. When local altimeter setting not received, use GOV altimeter setting and increase S-ILS 9 DA to 1591 feet; increase all MDAs 80 feet and S-LOC 9 visibility Cat C and D 3/8 SM, and Circling visibility Cat C and D 1/4 SM. For inop ALS when using GOV altimeter setting, increase S-ILS 9 all Cats visibility to 7/8 SM and S-LOC 9 Cats C and D visibility to 1 1/4 SM. For inop ALS, increase S-LOC 9 Cats C and D visibility 3/8 SM.

MALSR



MISSED APPROACH: Climb to 3000 then left turn direct BANGU LOM and hold.

ASOS <b>118.375</b>	MINNEAPOLIS CENTER <b>134.6 354.05</b>	UNICOM <b>122.8 (CTAF) 0</b>
------------------------	---	---------------------------------



CATEGORY	A	B	C	D
S-ILS 9		1521-1/2	200 (200-1/2)	
S-LOC 9	1860-1/2	539 (600-1/2)	1860-1	539 (600-1)
CIRCLING	1860-1 532 (600-1)	1940-1 612 (700-1)	2040-2 712 (800-2)	2040-2 1/4 712 (800-2 1/4)

HIRL Rwy 9-27	0
MIRL Rwy 18-36	0
REIL Rws 18, 27 and 36	0
FAF to MAP 3.9 NM	
Knots	60 90 120 150 180
Min:Sec	3:54 2:36 1:57 1:34 1:18

EC-1, 16 APR 2026 to 14 MAY 2026

EC-1, 16 APR 2026 to 14 MAY 2026