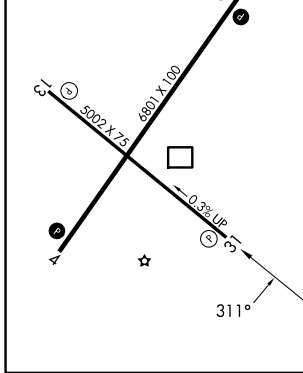
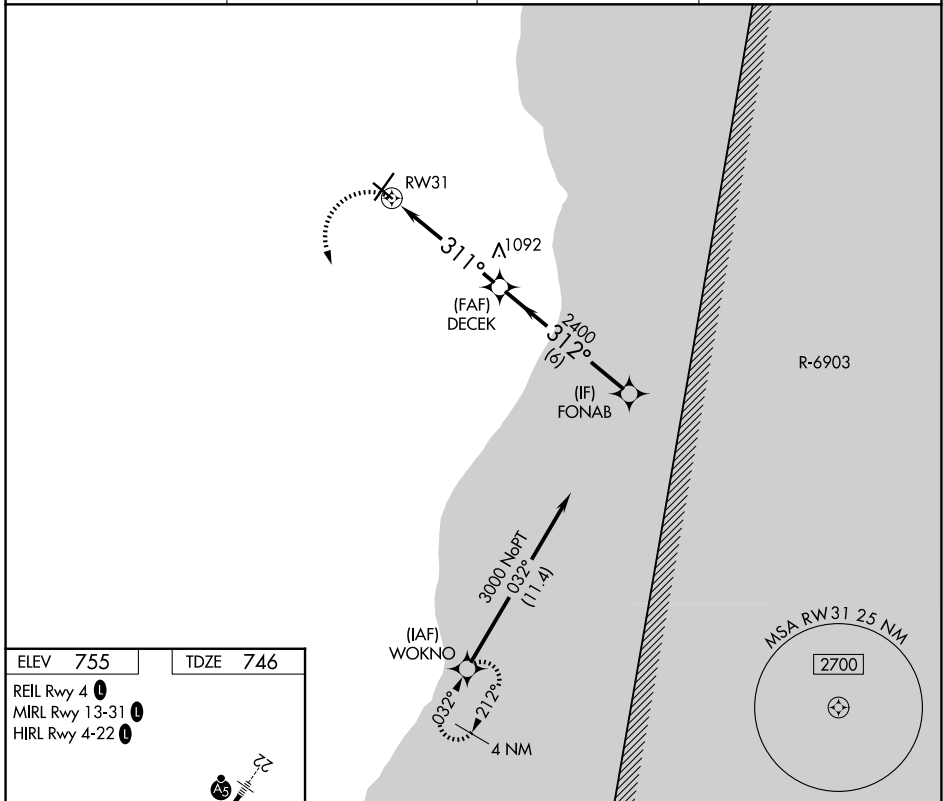


APP CRS 311°	Rwy Ldg 5002
	TDZE 746
	Apt Elev 755

RNAV (GPS) RWY 31

SHEBOYGAN COUNTY MEML INTL (SBM)

RNP APCH - GPS.		MISSED APPROACH: Climbing left turn to 3000 direct WOKNO and hold.	
Rwy 31 helicopter visibility reduction below 3/4 SM NA.		ASOS 118.425	MILWAUKEE APP CON 127.375 263.075
		GCO 121.725	UNICOM 122.7 (CTAF) 0



3000	WOKNO	FONAB	
1.5 NM to RWY 31 DECEK 2400 311° 3.05° TCH 40 312° 3000			
1.5 3.5 NM 6 NM			
CATEGORY	A	B	C
LNAV MDA	1260-1	514 (600-1)	1260-1 3/8 514 (600-1 3/8)
CIRCLING	1260-1	505 (600-1)	1340-1 1/2 585 (600-1 1/2) 1360-2 605 (700-2)

EC-3, 16 APR 2026 to 14 MAY 2026

EC-3, 16 APR 2026 to 14 MAY 2026