

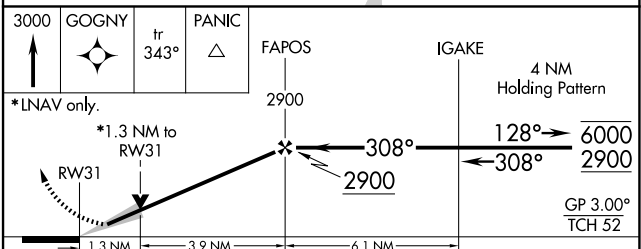
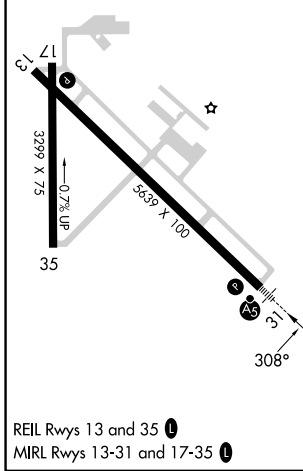
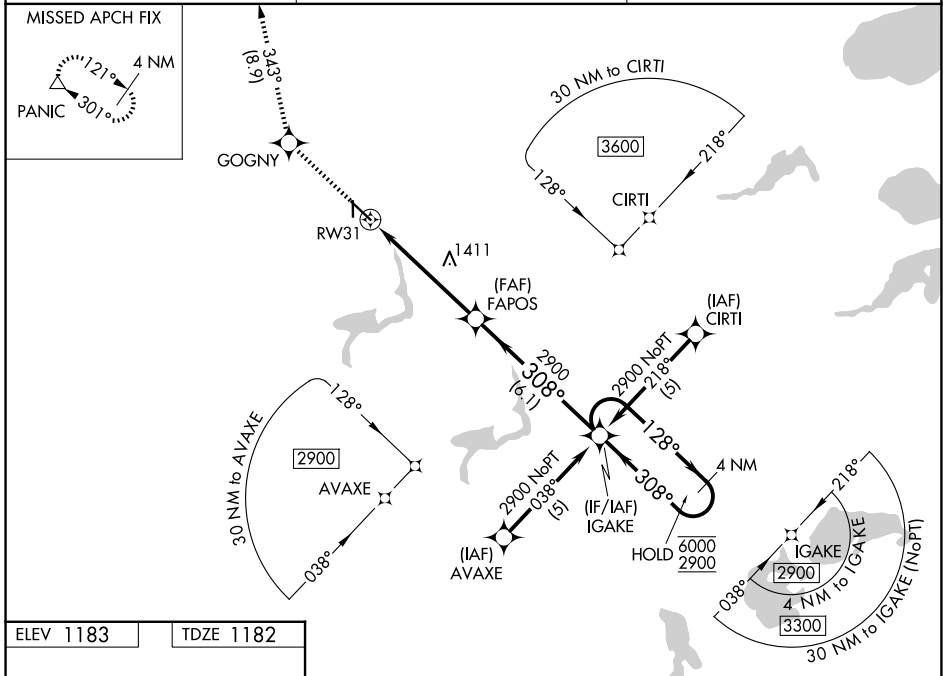
WAAS CH 42614 W31A	APP CRS 308°	Rwy Ldg TDZE 1182 Apt Elev 1183
--	------------------------	---

RNAV (GPS) RWY 31

FERGUS FALLS RGNL (FFM)

RNP APCH-GPS.	MALSR	MISSED APPROACH: Climb to 3000 direct GOGNY and on track 343° to PANIC and hold.
<p>▼ For uncompensated Baro-VNAV systems, LNAV/VNAV NA below -17°C or above 54°C. For inop ALS, increase LNAV/VNAV all Cats visibility to 1 SM and LNAV Cat D visibility to 1½ SM.</p>		

AWOS-3PT 119.05	MINNEAPOLIS CENTER 126.1 269.2	UNICOM 122.8 (CTAF) 0
---------------------------	--	---------------------------------



3000	GOGNY	tr 343°	PANIC	FAPOS	IGAKE	4 NM Holding Pattern
*LNAV only.						
*1.3 NM to RWY 31		RWY 31		2900	308°	128° 6000
1.3 NM		3.9 NM		6.1 NM		2900
CATEGORY	A	B	C	D		
LPV DA	1382-½		200 (200-½)			
LNAV/VNAV DA	1545-⅝		363 (400-⅝)			
LNAV MDA	1640-½		458 (500-½)		1640-⅞ 458 (500-⅞)	
CIRCLING	1640-1	1740-1	1820-1¾	1940-2½		
	457 (500-1)	557 (600-1)	637 (700-1¾)	757 (800-2½)		

NC-1, 16 APR 2026 to 14 MAY 2026

NC-1, 16 APR 2026 to 14 MAY 2026