

APP CRS	Rwy Ldg	<b>3299</b>
<b>354°</b>	TDZE	<b>1182</b>
	Apt Elev	<b>1183</b>

# RNAV (GPS) RWY 35

FERGUS FALLS RGNL (FFM)

RNP APCH-GPS.

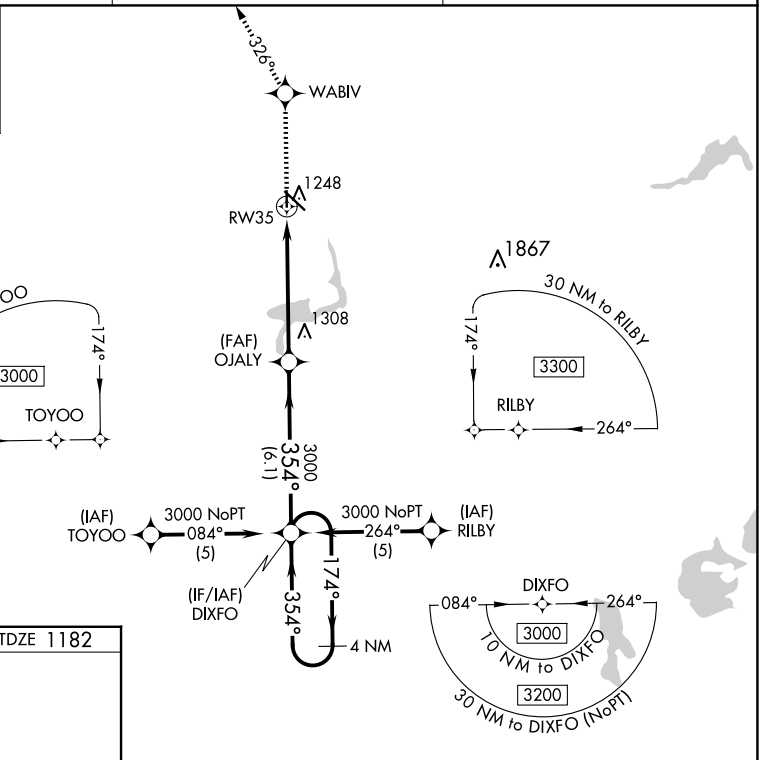
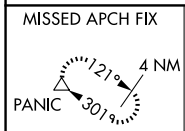
**⚠** When local altimeter setting not received, use Elbow Lake altimeter setting and increase all MDAs 60 feet, increase LNAV and Circling Cat C visibility ¼ SM. VDP NA when using Elbow Lake altimeter setting.

MISSED APPROACH: Climb to 3000 direct WABIV and via track 326° to PANIC and hold.

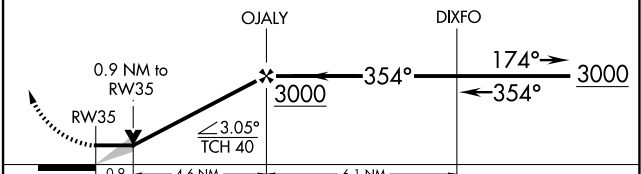
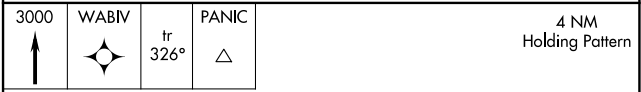
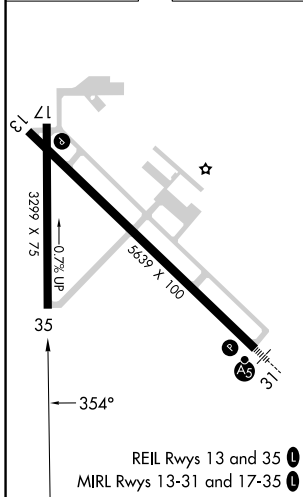
AWOS-3PT  
**119.05**

MINNEAPOLIS CENTER  
**126.1 269.2**

UNICOM  
**122.8 (CTAF) 0**



ELEV 1183 TDZE 1182



CATEGORY	A	B	C	D
LNAV MDA	1560-1 378 (400-1)			NA
CIRCLING	1640-1 457 (500-1)	1740-1 557 (600-1)	1820-1¾ 637 (700-1¾)	NA

NC-1, 16 APR 2026 to 14 MAY 2026

NC-1, 16 APR 2026 to 14 MAY 2026