

WAAS CH <b>90307</b> <b>W20A</b>	APP CRS <b>203°</b>	Rwy Ldg TDZE Apt Elev	<b>5197</b> <b>827</b> <b>827</b>
--	------------------------	-----------------------------	---

# RNAV (GPS) RWY 20

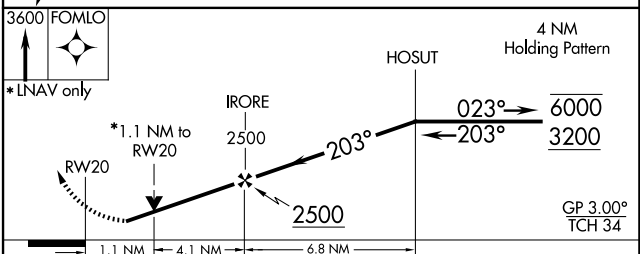
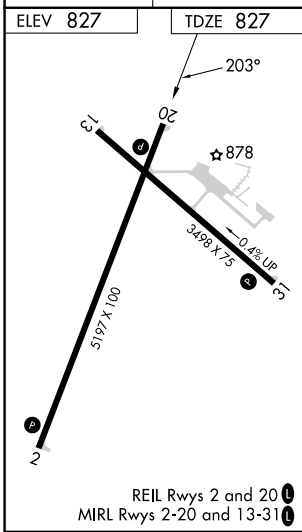
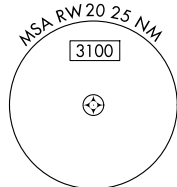
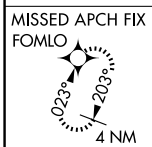
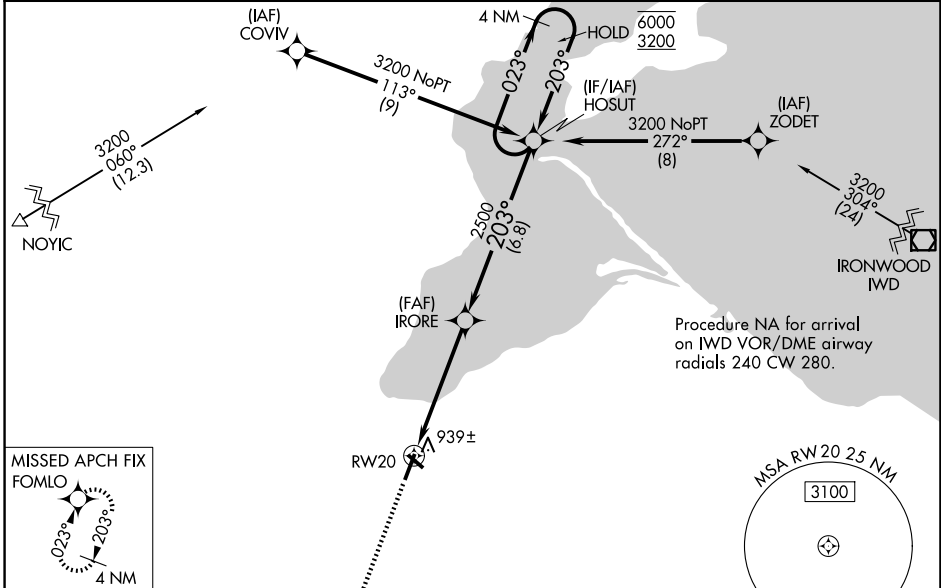
JOHN F KENNEDY MEML (ASX)

**RNP APCH.**

Baro-VNAV and VDP NA when using Ironwood altimeter setting. Rwy 20 helicopter visibility reduction below 3/4 SM NA. For uncompensated Baro-VNAV systems, LNAV/VNAV NA below -22°C or above 54°C. When local altimeter setting not received, use Ironwood altimeter setting; increase LPV DA to 1260 feet and all visibilities 1/2 SM; increase LNAV/VNAV DA to 1256 feet and all visibilities 1/2 SM; increase all MDA 140 feet and LNAV visibility Cat C/D 3/8 SM and Circling visibility Cat C/D 1/2 SM.

**MISSED APPROACH:**  
Climb to 3600 feet  
FOMLO and hold.

ASOS <b>126.775</b>	MINNEAPOLIS CENTER <b>126.45 276.4</b>	GCO <b>122.25</b>	UNICOM <b>122.8 (CTAF)</b>
------------------------	---	----------------------	-------------------------------



CATEGORY	A	B	C	D
LPV DA		1128-1	301 (400-1)	
LNAV/VNAV DA		1124-1	297 (300-1)	
LNAV MDA		1200-1	373 (400-1)	
CIRCLING	1240-1 413 (500-1)	1280-1 453 (500-1)	1440-1 3/4 613 (700-1 3/4)	1560-2 1/4 733 (800-2 1/4)

EC-3, 16 APR 2026 to 14 MAY 2026

EC-3, 16 APR 2026 to 14 MAY 2026