

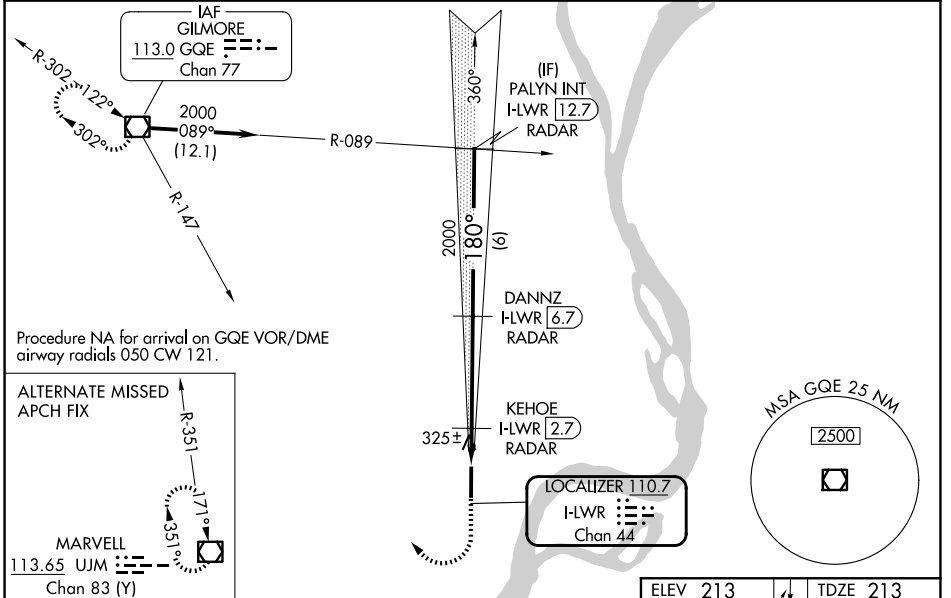
LOC/DME I-LWR 110.7 Chan 44	APP CRS 180°	Rwy Ldg 6003 TDZE 213 Apt Elev 213
---	------------------------	---

ILS or LOC RWY 17

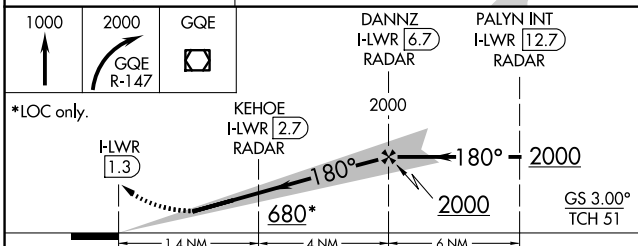
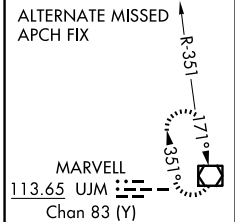
WEST MEMPHIS MUNI (A W M)

DME or RADAR required.	MALSR
<p>NA For inop ALS, increase S-LOC 17 Cat C/D visibility to 1$\frac{1}{2}$ SM and KEHOE FIX MINIMUMS S-LOC 17 Cats C/D visibility to 1 SM.</p>	<p>MISSED APPROACH: Climb to 1000 then climbing right turn to 2000 on GQE VOR/DME R-147 to GQE VOR/DME and hold.</p>

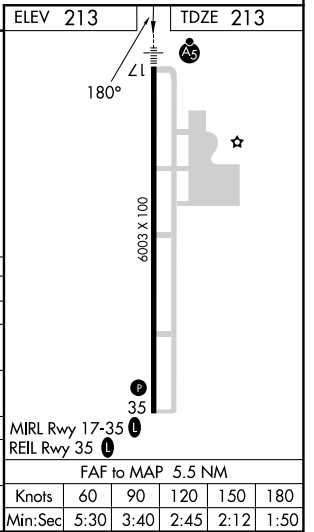
ASOS 118.175	MEMPHIS APP CON 119.1 291.6	CLNC DEL 121.7	UNICOM 123.05 (CTAF) 1
------------------------	---------------------------------------	--------------------------	---



Procedure NA for arrival on GQE VOR/DME airway radials 050 CW 121.



CATEGORY	A	B	C	D
S-ILS 17	413- $\frac{1}{2}$ 200 (200- $\frac{1}{2}$)			
S-LOC 17	680- $\frac{1}{2}$	467 (500- $\frac{1}{2}$)	680-1	467 (500-1)
CIRCLING	680-1 467 (500-1)	740-1 527 (600-1)	800-1 $\frac{1}{2}$ 587 (600-1 $\frac{1}{2}$)	920-2 $\frac{1}{4}$ 707 (800-2 $\frac{1}{4}$)
KEHOE FIX MINIMUMS				
S-LOC 17	580- $\frac{1}{2}$	367 (400- $\frac{1}{2}$)	580- $\frac{5}{8}$	367 (400- $\frac{5}{8}$)
CIRCLING	640-1 427 (500-1)	740-1 527 (600-1)	800-1 $\frac{1}{2}$ 587 (600-1 $\frac{1}{2}$)	920-2 $\frac{1}{4}$ 707 (800-2 $\frac{1}{4}$)



SC-1, 16 APR 2026 to 14 MAY 2026

SC-1, 16 APR 2026 to 14 MAY 2026

MIRL Rwy 17-35 1	REIL Rwy 35 1
FAF to MAP 5.5 NM	
Knots	60 90 120 150 180
Min:Sec	5:30 3:40 2:45 2:12 1:50