

WAAS CH <b>69316</b> <b>W17A</b>	APP CRS <b>180°</b>	Rwy Ldg TDZE Apt Elev	<b>6003</b> <b>213</b> <b>213</b>
--	------------------------	-----------------------------	---

# RNAV (GPS) RWY 17

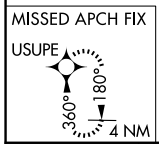
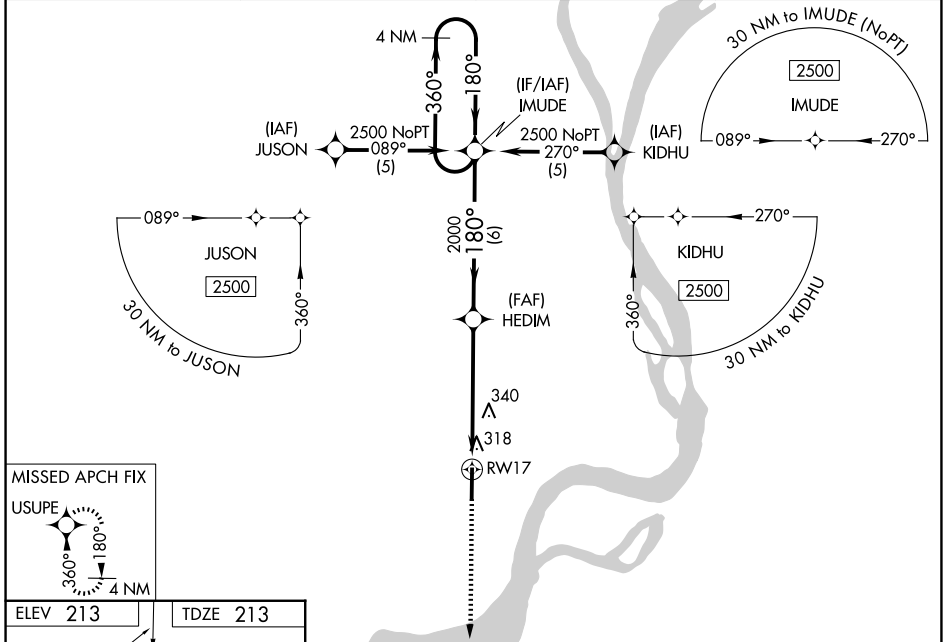
WEST MEMPHIS MUNI (A W M)

**RNP APCH.**

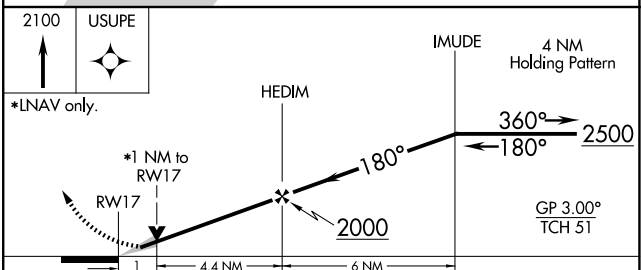
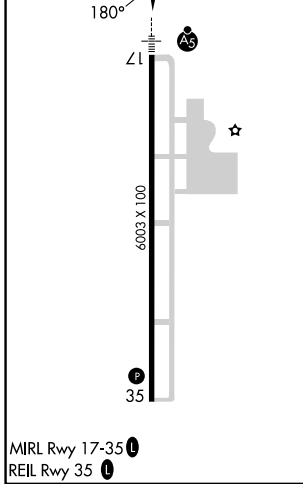
**⚠** For uncompensated Baro-VNAV systems, LNAV/VNAV NA below -15°C (5°F) or above 48°C (118°F). When local altimeter setting not received, use Frederick W Smith Intl altimeter setting and increase LPV DA to 513 feet, LNAV/VNAV DA to 644 feet and all visibilities ¼ SM; increase all MDAs 60 feet and increase visibility LNAV Cat C and Circling Cat C and D ¼ SM. Baro-VNAV and VDP NA when using Frederick W Smith Intl altimeter setting.

**MALSR** MISSED APPROACH: Climb to 2100 direct USUPE and hold.

ASOS <b>118.175</b>	MEMPHIS APP CON <b>119.1 291.6</b>	CLNC DEL <b>121.7</b>	UNICOM <b>123.05</b> (CTAF) <b>📻</b>
------------------------	---------------------------------------	--------------------------	---



ELEV <b>213</b>	TDZE <b>213</b>
-----------------	-----------------



CATEGORY	A	B	C	D
LPV DA		463-½	250 (300-½)	
LNAV/VNAV DA		594-¾	381 (400-¾)	
LNAV MDA	600-½	387 (400-½)	600-⅝ 387 (400-⅝)	600-1 387 (400-1)
CIRCLING	640-1 427 (500-1)	740-1 527 (600-1)	800-1½ 587 (600-1½)	920-2¼ 707 (800-2¼)

SC-1, 16 APR 2026 to 14 MAY 2026

SC-1, 16 APR 2026 to 14 MAY 2026