

LOM OS 515	APP CRS 093°	Rwy Ldg TDZE Apt Elev	5004 905 905
----------------------	------------------------	-----------------------------	---

NDB RWY 9R

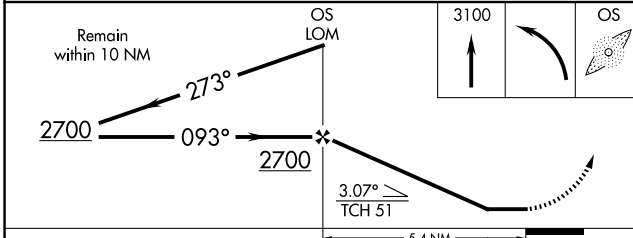
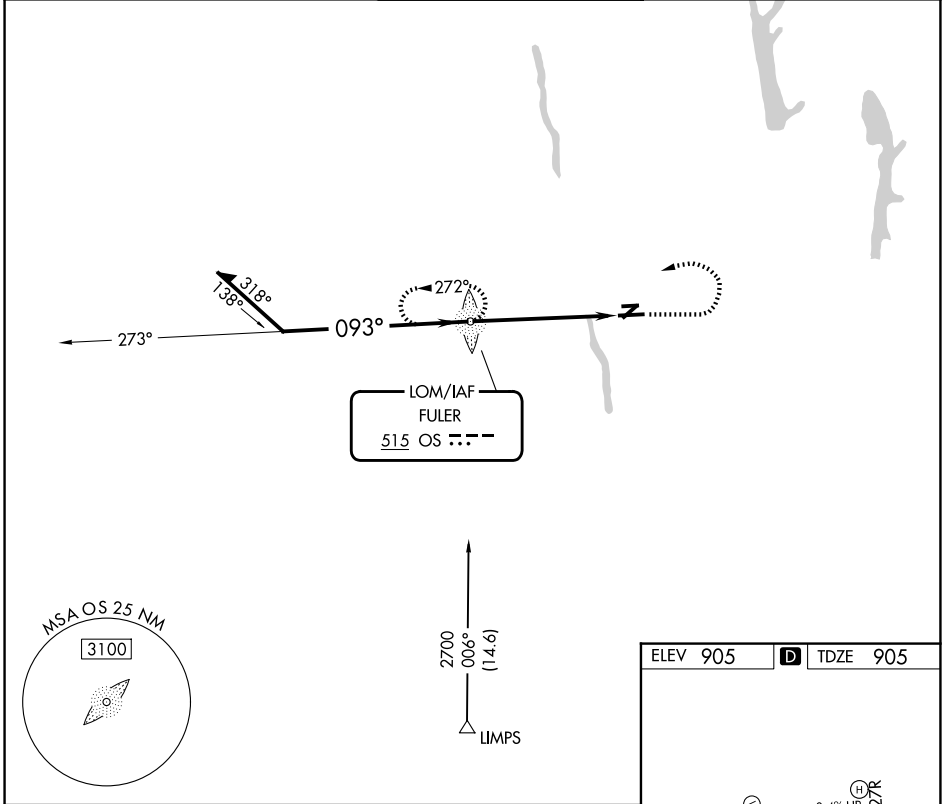
OHIO STATE UNIVERSITY (OSU)

⚠ When local altimeter setting not received, use John Glenn Columbus Intl altimeter setting and increase all MDAs 40 feet and S-9R visibility Cat C ¼ SM and Cat D and Circling Cat D ½ SM. Circling Rwy 23 NA at night.



MISSED APPROACH: Climb to 3100 then left turn direct OS LOM and hold.

ATIS 121.35	COLUMBUS APP CON 125.95 317.775	STATE TOWER ★ 118.8 (CTAF) 254.325	GND CON 121.7	UNICOM 122.95
-----------------------	---	--	-------------------------	-------------------------



ELEV 905	D TDZE 905
----------	-------------------

REIL Rwy 27L
HIRL Rwy 9R-27L
MIRL Rwys 9L-27R

FAF to MAP 5.4 NM					
Knots	60	90	120	150	180
Min:Sec	5:24	3:36	2:42	2:10	1:48

CATEGORY	A	B	C	D
S-9R	1460-¾	555 (600-¾)	1460-1½	555 (600-1½)
CIRCLING	1460-1	555 (600-1)	1460-1⅝	1680-2½
			555 (600-1⅝)	775 (800-2½)

EC-2, 16 APR 2026 to 14 MAY 2026

EC-2, 16 APR 2026 to 14 MAY 2026