

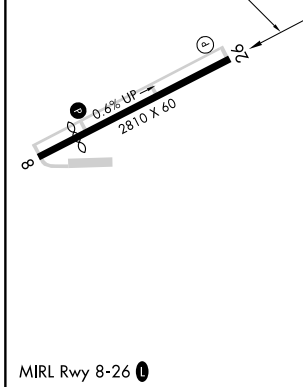
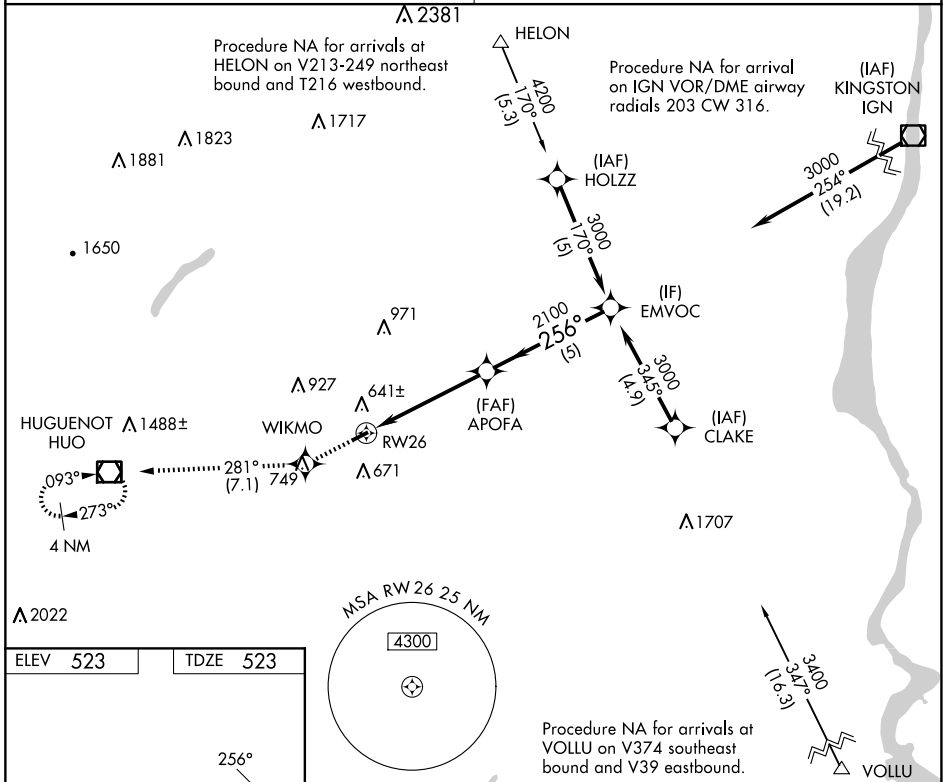
WAAS CH 40030 W26A	APP CRS 256°	Rwy Ldg TDZE Apt Elev	2810 523 523
--	------------------------	-----------------------------	---

RNAV (GPS) RWY 26

RANDALL (Ø6N)

RNP APCH.	Procedure NA at night. Rwy 26 helicopter visibility reduction below 1 SM NA. Use Newburgh altimeter setting; when not received, use Montgomery altimeter setting.	MISSED APPROACH: Climb to 3500 direct WIKMO and on track 281° to HVO VOR/DME and hold, continue climb-in-hold to 3500.
-----------	--	--

NEW YORK APP CON 132.75 363.1	UNICOM 122.8 (CTAF) 0
---	---------------------------------



3500	WIKMO	tr 281°	HVO	Visual Segment - Obstacles.
				EMVOC
RWY 26		APOFA	2100	3000
CATEGORY	A	B	C	D
LP MDA	1020-1 497 (500-1)		NA	
LNAV MDA	1060-1 537 (600-1)		NA	
CIRCLING	1080-1 557 (600-1)		NA	

NE-2, 16 APR 2026 to 14 MAY 2026

NE-2, 16 APR 2026 to 14 MAY 2026