

LOM AK <b>362</b>	APP CRS <b>351°</b>	Rwy Ldg TDZE Apt Elev	<b>3947</b> <b>1129</b> <b>1135</b>
----------------------	------------------------	-----------------------------	---

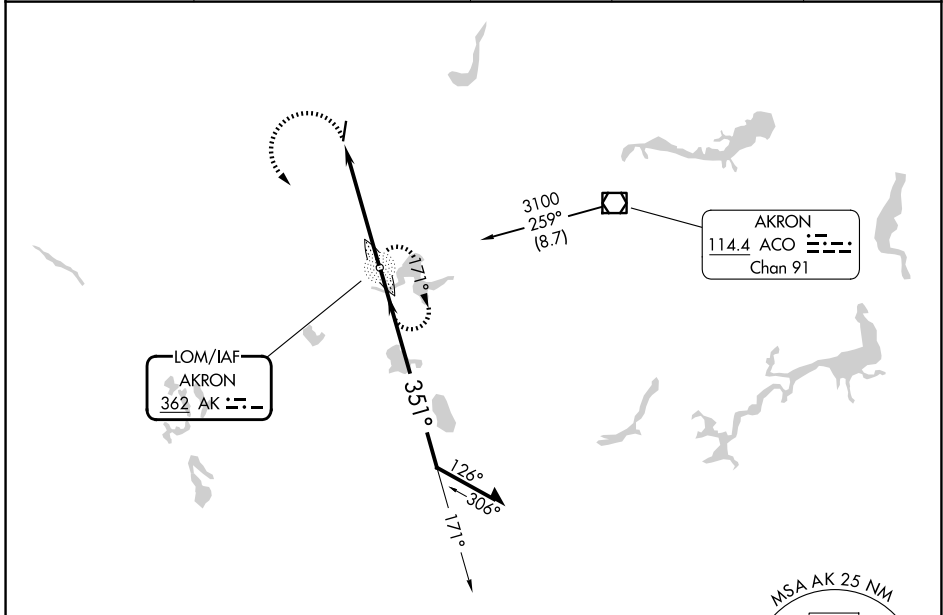
# NDB RWY 2

KENT STATE UNIVERSITY (1G3)

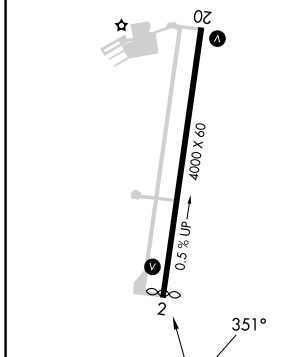
**NA** Rwy 2 helicopter visibility reduction below 1 SM NA. When local altimeter setting not received, use AKR altimeter setting and increase all MDAs 40 feet, increase S-2 Cat C and Circling Cat C visibility ½ SM. Straight-in and Circling Rwy 2 NA at night.

**MISSED APPROACH:** Climbing left turn to 3100 direct AKRON LOM and hold. Continue climb in hold to 3100.

AWOS-2 <b>119.15</b>	CLEVELAND APP CON * <b>125.5 371.875</b>	CLNC DEL <b>125.65</b>	UNICOM <b>122.725 (CTAF)</b>	<b>122.9</b>
-------------------------	---	---------------------------	---------------------------------	--------------



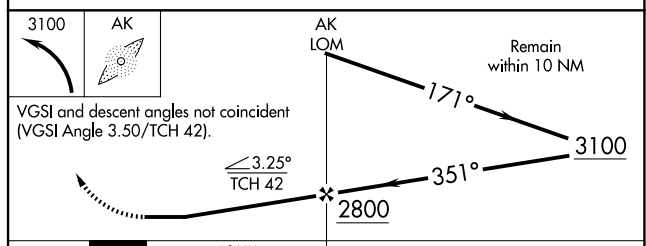
ELEV 1135	TDZE 1129
-----------	-----------



MIRL Rwy 2-20 **1**  
REIL Rwys 2 and 20 **1**

FAF to MAP 4.8 NM

Knots	60	90	120	150	180
Min:Sec	4:48	3:12	2:24	1:55	1:36



CATEGORY	A	B	C	D
S-2	1760-1	631 (700-1)	1760-1¾ 631 (700-1¾)	NA
CIRCLING	1760-1	625 (700-1)	1760-1¾ 625 (700-1¾)	NA

EC-2, 16 APR 2026 to 14 MAY 2026

EC-2, 16 APR 2026 to 14 MAY 2026