

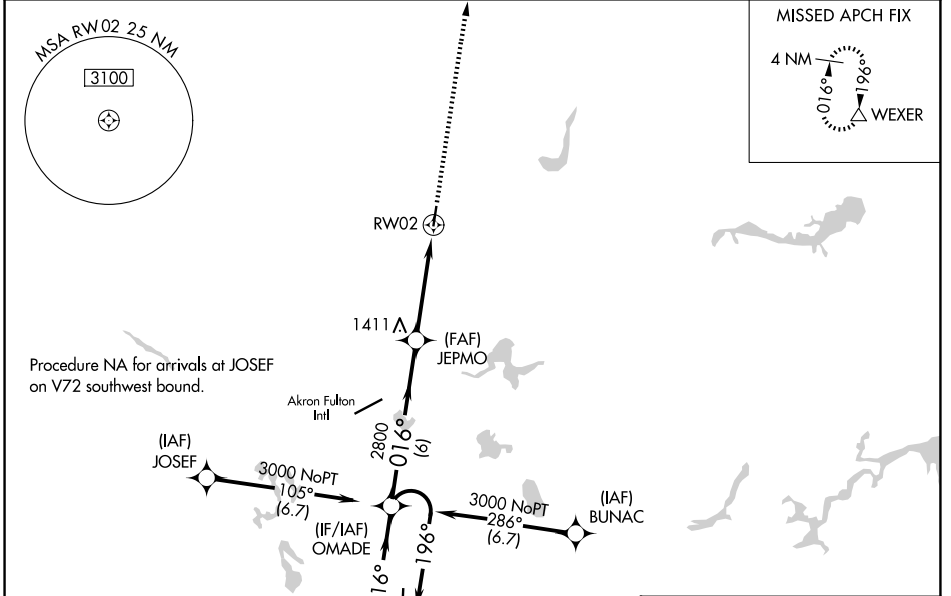
WAAS CH <b>61001</b> <b>W02A</b>	APP CRS <b>016°</b>	Rwy Ldg <b>3947</b> TDZE <b>1129</b> Apt Elev <b>1135</b>
--	------------------------	---

# RNAV (GPS) RWY 2

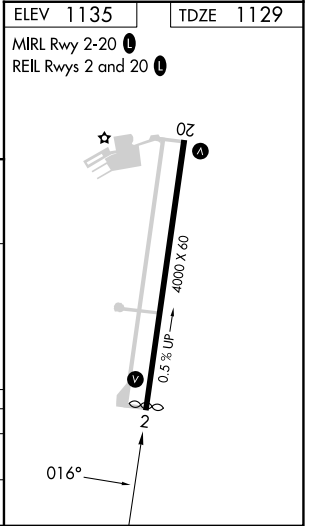
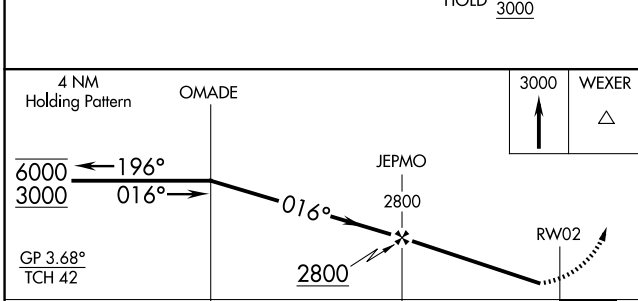
KENT STATE UNIVERSITY (1G3)

RNP APCH - GPS.		MISSED APPROACH: Climb to 3000 direct WEXER and hold.
Rwy 2 helicopter visibility reduction below 1 SM NA. Procedure NA at night. When local altimeter setting not received, use AKR altimeter setting and increase LPV DA to 1529 and all visibilities 1/2 SM, increase all MDAs 40 feet and increase LNAV Cat C visibility 1/2 SM.		

AWOS-2 <b>119.15</b>	CLEVELAND APP CON ★ <b>125.5 371.875</b>	CLNC DEL <b>125.65</b>	UNICOM <b>122.725</b> (CTAF)	<b>122.9</b>
-------------------------	---	---------------------------	---------------------------------	--------------



ELEV 1135	TDZE 1129
MIRL Rwy 2-20	REIL Rws 2 and 20



CATEGORY	A	B	C	D
LPV DA	1499-1 370 (400-1)			NA
LNAV MDA	1760-1	631 (700-1)	1760-1 3/4 631 (700-1 3/4)	NA