

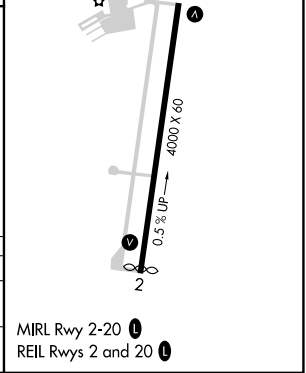
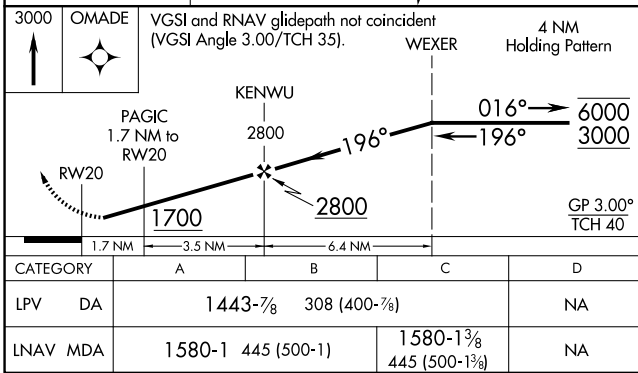
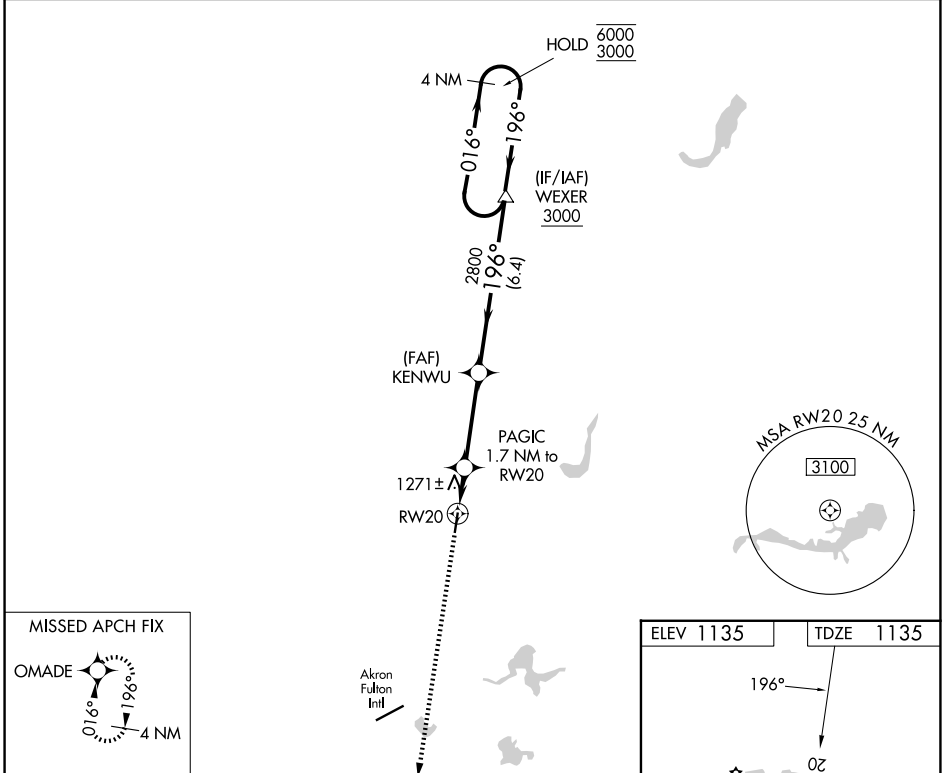
WAAS CH 65701 W20A	APP CRS 196°	Rwy Ldg TDZE 1135 Apt Elev 1135
--	------------------------	---

RNAV (GPS) RWY 20

KENT STATE UNIVERSITY (1G3)

RNP APCH - GPS.		MISSED APPROACH: Climb to 3000 direct OMADE and hold.	
NA	Rwy 20 helicopter visibility reduction below 3/4 SM NA. When local altimeter setting not received, use AKR altimeter setting and increase LPV DA to 1473 feet and all visibilities 1/8 SM. Increase all MDAs 40 feet.		

AWOS-2 119.15	CLEVELAND APP CON * 125.5 371.875	CLNC DEL 125.65	UNICOM 122.725 (CTAF)	122.9
-------------------------	---	---------------------------	---------------------------------	--------------



KENT, OHIO Amdt 2 19MAR26		41°09'N-81°25'W		KENT STATE UNIVERSITY (1G3) RNAV (GPS) RWY 20	
------------------------------	--	-----------------	--	---	--

EC-2, 16 APR 2026 to 14 MAY 2026

EC-2, 16 APR 2026 to 14 MAY 2026