


LOC I-SUS 110.55	APP CRS 079°	Rwy Ldg TDZE Apt Elev	7225 462 463
----------------------------	------------------------	-----------------------------	---

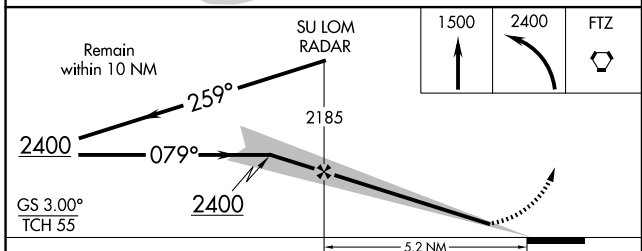
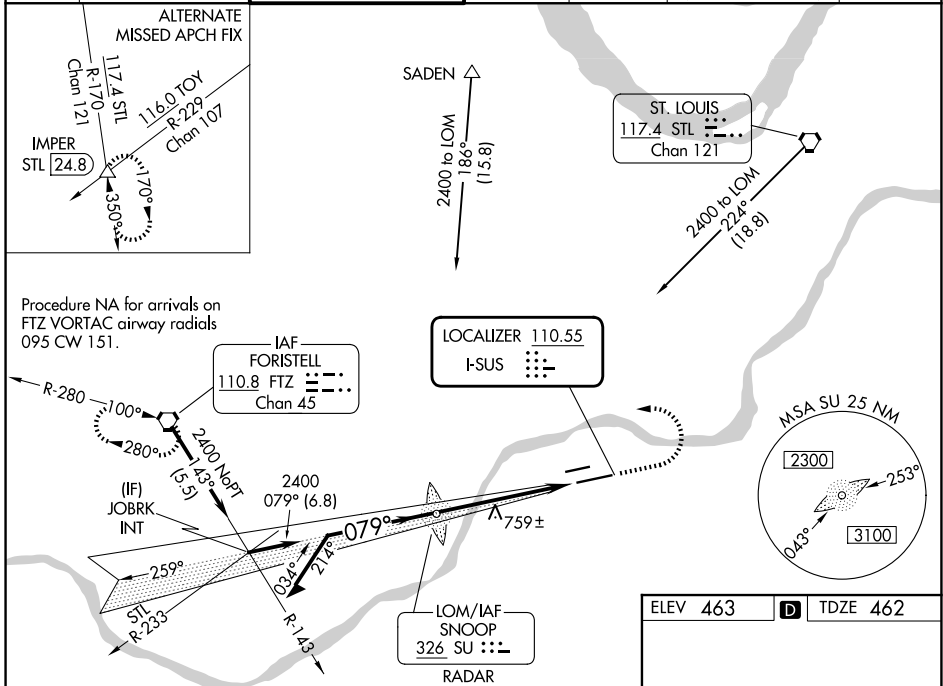
ILS or LOC RWY 8R

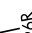

SPIRIT OF ST LOUIS (SUS)

⚠ When local alimeter setting not received, use St Louis Lambert Intl alimeter setting and increase all DA to 719 feet, all MDA 60 feet, increase S-LOC 8R Cats C/D to RVR 5000 and Circling Cat C visibility ¼ mile. For inop MALS/R, increase S-LOC 8R Cats C/D visibility to RVR 6000. For inop MALS/R when using St Louis Lambert Intl alimeter setting, increase S-LOC 8R Cats C/D visibility to 1½ mile.
 *RVR 1800 authorized with the use of FD or AP or HUD to DA (NA when using St Louis Lambert Intl alimeter setting).

MALS/R

MISSED APPROACH: Climb to 1500 then climbing left turn to 2400 direct FTZ VORTAC and hold.

ATIS 134.8	ST. LOUIS APP CON 126.5 254.3	SPIRIT TOWER* 124.75 (CTAF) 0 257.2	GND CON 121.7	CLNC DEL 133.1	ST. LOUIS CLNC DEL 121.7 (when tower closed)	UNICOM 122.95
----------------------	---	---	-------------------------	--------------------------	---	-------------------------



ELEV 463	D	TDZE 462			
 TWR  MALS/R 5000 X 75 7486 X 150 26R 26L 079°					
MIRL Rwy 8L-26R 0					
MIRL Rwy 8R-26L 0					
FAF to MAP 5.2 NM					
Knots	60	90	120	150	180
Min:Sec	5:12	3:28	2:36	2:05	1:44

CATEGORY	A	B	C	D
S-ILS 8R*	662/24 200 (200-½)			
S-LOC 8R	880/24	418 (500-½)	880/40	418 (500-¾)
CIRCLING	1100-1 637 (700-1)	1140-1 677 (700-1)	1160-2 697 (700-2)	1360-3 897 (900-3)

NC-3, 16 APR 2026 to 14 MAY 2026

NC-3, 16 APR 2026 to 14 MAY 2026