

# LINDBERGH NINE DEPARTURE

AL-5400 (FAA)

SPIRIT OF ST LOUIS (SUS)  
ST. LOUIS, MISSOURI

ST LOUIS DEP CON  
126.5 254.3  
ATIS  
134.8  
CLNC DEL  
133.1  
CLNC DEL  
121.7 (when twr closed)  
GND CON  
121.7  
SPIRIT TOWER\*  
124.75 257.2

DME and RADAR required.

ST LOUIS  
117.4 STL  
Chan 121

**TOP ALTITUDE:  
ASSIGNED BY ATC**

VICHY  
117.7 VIH  
Chan 124

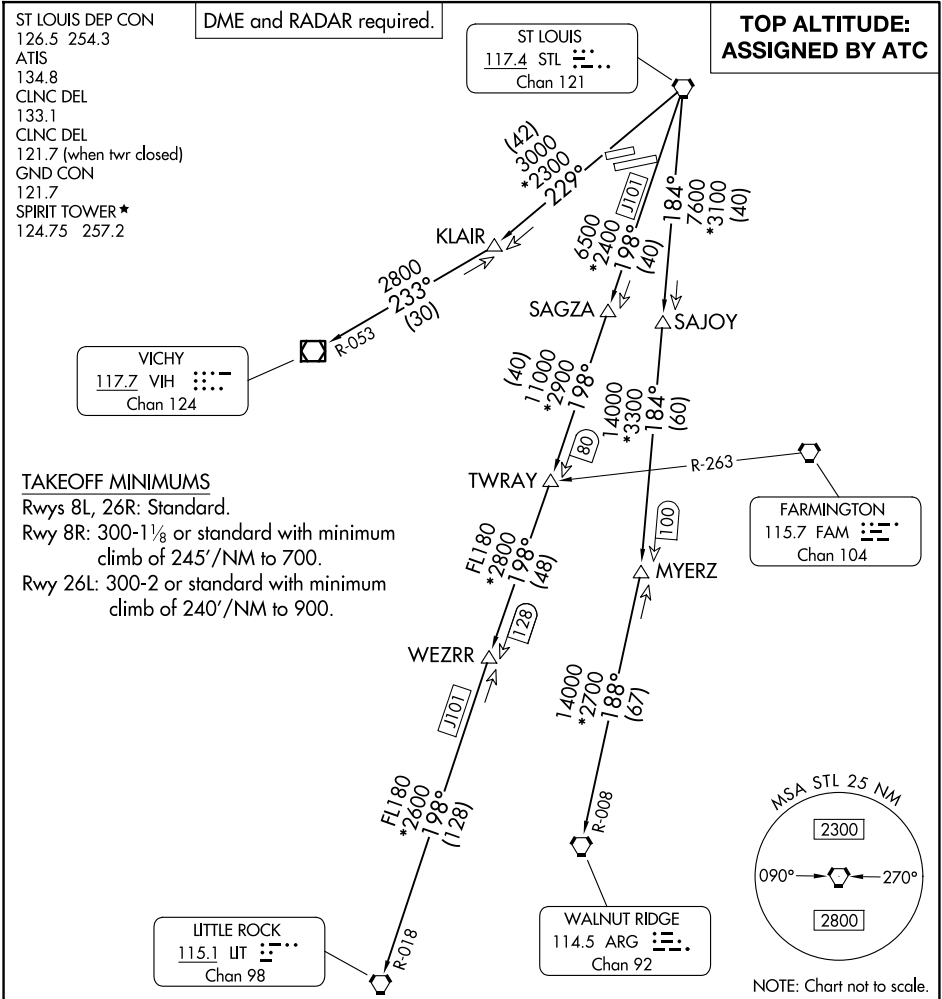
### TAKEOFF MINIMUMS

Rwys 8L, 26R: Standard.

Rwy 8R: 300-1½ or standard with minimum climb of 245'/NM to 700.

Rwy 26L: 300-2 or standard with minimum climb of 240'/NM to 900.

NC-3, 16 APR 2026 to 14 MAY 2026



NC-3, 16 APR 2026 to 14 MAY 2026

### DEPARTURE ROUTE DESCRIPTION

**TAKEOFF ALL RUNWAYS:** Climb on assigned heading for RADAR vectors to appropriate route, maintain ATC assigned altitude and expect filed altitude 10 minutes after departure.

**LITTLE ROCK TRANSITION (LINDY9.LIT):** From over STL VORTAC on STL R-198 and LIT R-018 to LIT VORTAC.

**MYERZ TRANSITION (LINDY9.MYERZ):** From over STL VORTAC on STL R-184 to MYERZ.

**VICHY TRANSITION (LINDY9.VIH):** From over STL VORTAC on STL R-229 and VIH R-053 to VIH VOR/DME.

**WALNUT RIDGE TRANSITION (LINDY9.ARG):** From over STL VORTAC on STL R-184 and ARG R-008 to ARG VORTAC.

# LINDBERGH NINE DEPARTURE