

25275

AIRPORT DIAGRAM

AL-5401 (FAA)

MONTGOMERY-GIBBS EXEC (MYF)
SAN DIEGO, CALIFORNIA

ATIS
 126.9
 MONTGOMERY TOWER ★
 119.2 269.4 (RWYS 05, 10L/R, 23, 28L)
 125.7 269.4 (RWY 28R)
 GND CON
 118.225
 CLNC DEL
 123.725

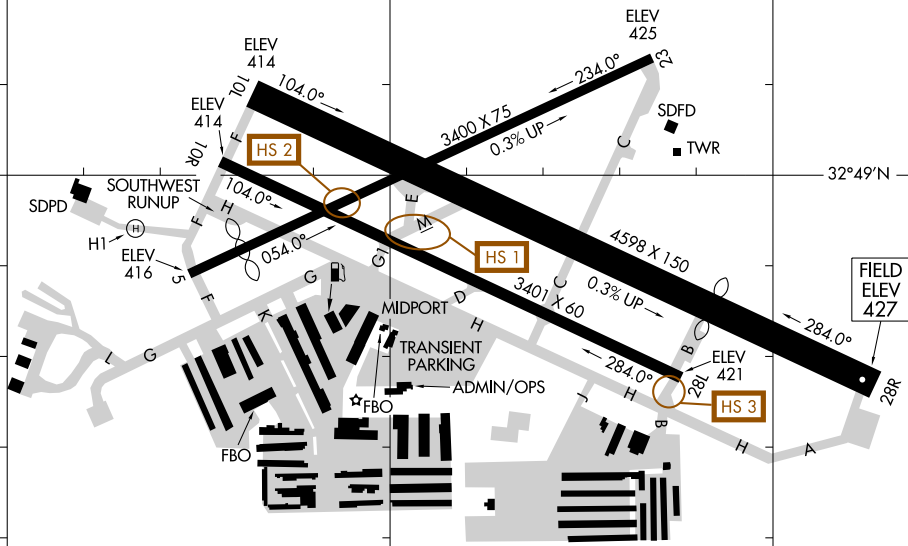
32°49.5'N

RWY 05-23
 PCN 55 F/B/Y/T
 S-12
 RWY 10L-28R
 PCN 35 F/C/Y/T
 S-12
 RWY 10R-28L
 PCN 43 F/C/Y/T
 S-12

VAR 110° E
 JANUARY 2025
 ANNUAL RATE OF CHANGE
 0.1° W

SW-3, 16 APR 2026 to 14 MAY 2026

SW-3, 16 APR 2026 to 14 MAY 2026



SAID in use. Operate transponders with altitude reporting mode and ADS-B (if equipped) enabled on all airport surfaces.

CAUTION: BE ALERT TO RUNWAY CROSSING CLEARANCES.
READBACK OF ALL RUNWAY HOLDING INSTRUCTIONS IS REQUIRED.

117°09'W

117°08.5'W

117°08'W

AIRPORT DIAGRAM

25275

MONTGOMERY-GIBBS EXEC (MYF)
SAN DIEGO, CALIFORNIA