

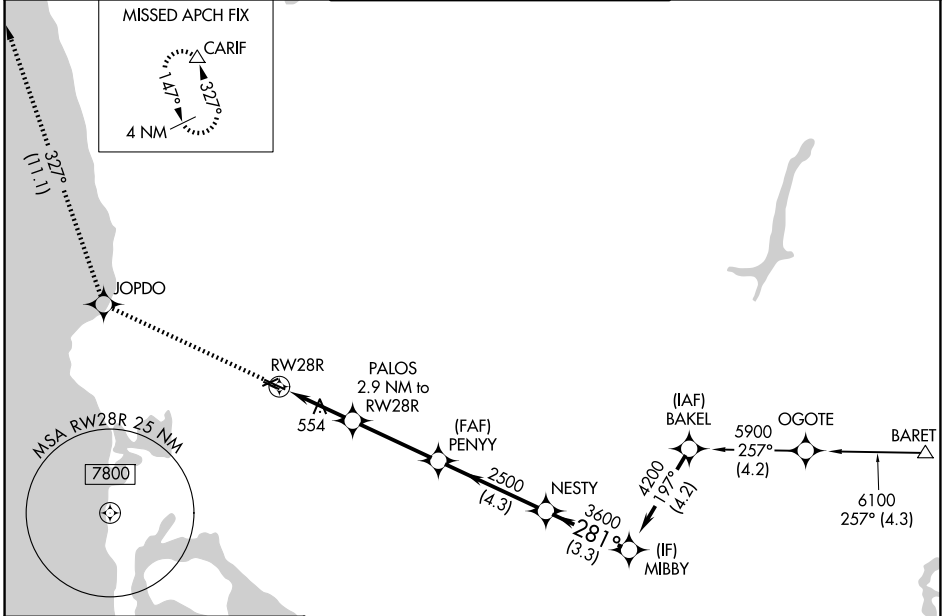
WAAS CH <b>45710</b> <b>W28A</b>	APP CRS <b>281°</b>	Rwy Ldg TDZE Apt Elev	<b>3399</b> <b>423</b> <b>427</b>
--	------------------------	-----------------------------	---

# RNAV (GPS) RWY 28R

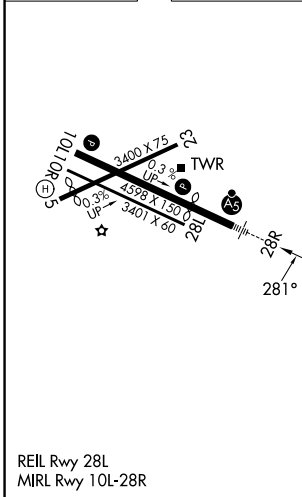
MONTGOMERY-GIBBS EXEC (MYF)

RNP APCH.		MALSR	MISSED APPROACH: Climb to 3000 direct JOPDO and on track 327° to CARIF and hold.
▼ Rwy 28R helicopter visibility reduction below ¾ SM NA. ▲ For uncompensated Baro-VNAV systems, LNAV/VNAV NA below -15°C or above 54°C.			

ATIS <b>126.9</b>	SOCAL APP CON <b>124.35 279.625</b>	MONTGOMERY TOWER ★ <b>119.2 (CTAF) 0 269.4 (5, 10L/R, 23, 28L)</b> <b>125.7 269.4 (28R)</b>	GND CON <b>118,225</b>	UNICOM <b>123,075</b>
----------------------	--	---	---------------------------	--------------------------



ELEV 427	TDZE 423
----------	----------



	3000 JOPDO	tr 327°	CARIF				
				PALOS 2.9 NM to RWY 28R	PENNY 2500	NESTY 3600	MIBBY 4200
				* 1.2 NM to RWY 28R			GP 3.00° TCH 41
				RWY 28R	1380*	2500	
				1.2 NM	1.7 NM	3.4 NM	4.3 NM
							3.3 NM
CATEGORY	A	B	C	D			
LPV DA	673-¾	250 (300-¾)		NA			
LNAV/VNAV DA	750-¾	327 (400-¾)		NA			
LNAV MDA	840-¾	417 (500-¾)		NA			
CIRCLING	920-1	493 (500-1)		NA			