

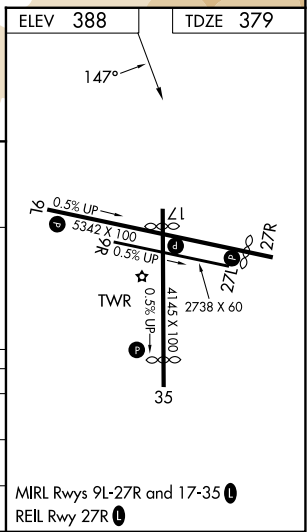
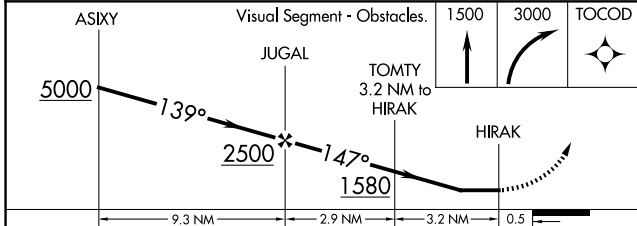
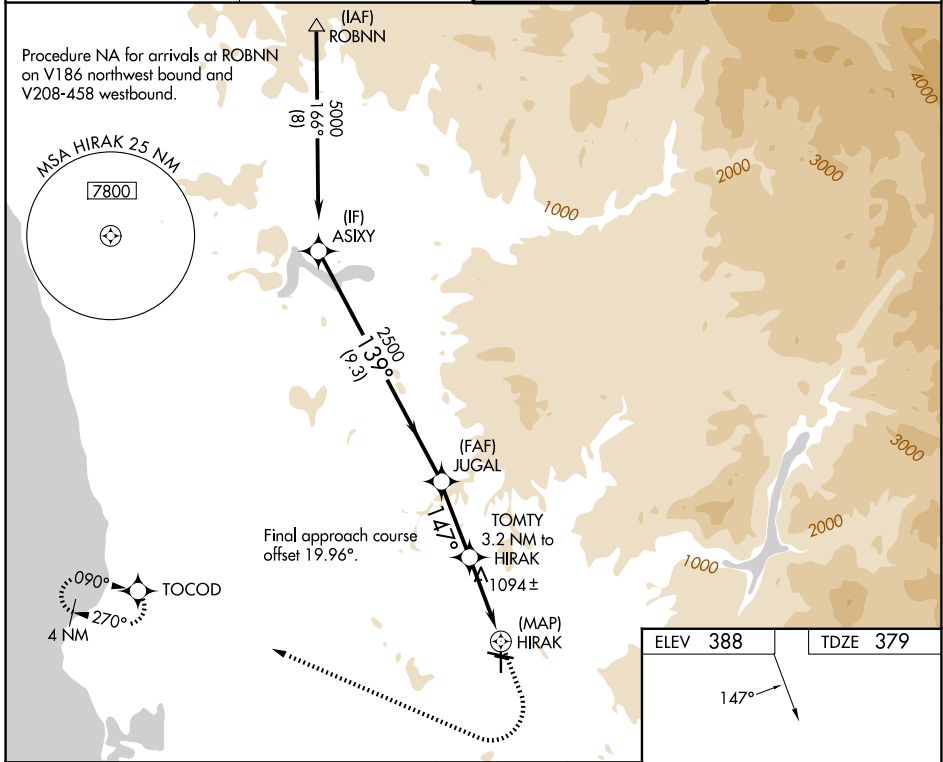
WAAS CH 86928 W17A	APP CRS 147°	Rwy Ldg TDZE Apt Elev	3695 379 388
--	------------------------	-----------------------------	---

RNAV (GPS) RWY 17

GILLESPIE FLD (SEE)

RNP APCH - GPS.	MISSED APPROACH: Climb to 1500 then climbing right turn to 3000 direct TOCOD and hold.
⚠ Circling NA northeast of Rws 17 and 27R. When local altimeter setting not received, use Miramar MCAS altimeter setting and increase all MDA 40 feet. Rwy 17 helicopter visibility reduction below 1 SM NA. Circling Rwy 27R, 35 NA at night.	

ATIS 125.45	SOCAL APP CON 124.35 279.625	GILLESPIE TOWER★ 120.7 (CTAF) 257.8	GND CON 121.7
-----------------------	--	---	-------------------------



CATEGORY	A	B	C	D
LP MDA	1360-1¼ 981 (1000-1¼)	1360-1½ 981 (1000-1½)	1360-3	981 (1000-3)
LNVA MDA	1380-1¼ 1001 (1000-1¼)	1380-1½ 1001 (1000-1½)	1380-3	1001 (1000-3)
CIRCLING	1440-1¼ 1052 (1100-1¼)	1440-1½ 1052 (1100-1½)	1940-3	1552 (1600-3)

SW-3, 16 APR 2026 to 14 MAY 2026

SW-3, 16 APR 2026 to 14 MAY 2026